



# CHAPTER 09

## EDUCATION ZONE

*Te Puna Mātauranga*

## 9 Education Zone

Refer to Chapters 11 to 20 for additional rules that may apply to this zone.

### 9.1 OBJECTIVES AND POLICIES

*Objective Ed1*      *The establishment, construction, and efficient and effective operation of education facilities to avoid adverse effects on the adjacent residential environment and transport network.*

Policy 1              To ensure that activities proposed to be located within education zones are essential to or directly associated with the educational centre and the needs of associated students, visitors and employees.

Policy 2              To ensure that the amenity values of areas adjoining educational centres and the safe and efficient operation of the transport network are protected from activities occurring within the Education Zone.

### 9.2 RULES

The following standards and terms apply to **Permitted, Controlled, and Restricted Discretionary** activities and will be used as a guide for **Discretionary and Non-Complying** activities.

Non-compliance with any rule will make the activity **Discretionary** unless otherwise stated in the rule.

Refer to Chapters 11-20 for additional rules that may apply to this zone.

#### 9.2.1 Development Plans

9.2.1.1              Subdivision, use and development in accordance with an approved development plan as shown in Appendix 9.4 is a **Permitted Activity**, and where development is not in accordance with the development plan for the site, it shall be a **Discretionary activity**.

#### 9.2.2 Some Plan Rules Continue to Apply

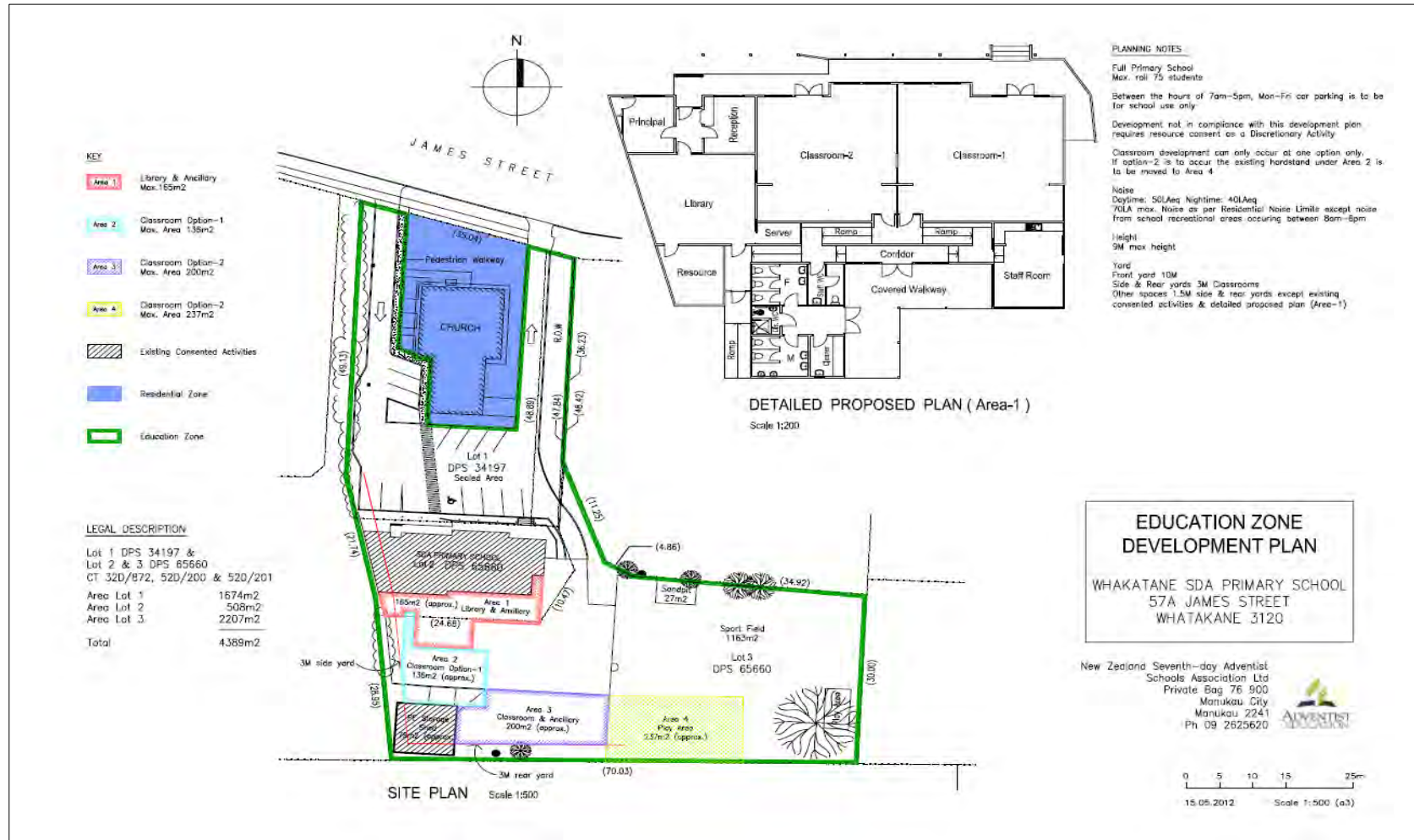
9.2.2.1              The location, size and height of building, yards, parking and access shown on the development plan shall apply. All rules in this Plan also apply unless the approved Development Plan specifies otherwise. Height, yard and light plane rules are contained in Chapter 4 (Residential and Urban Living Zones).

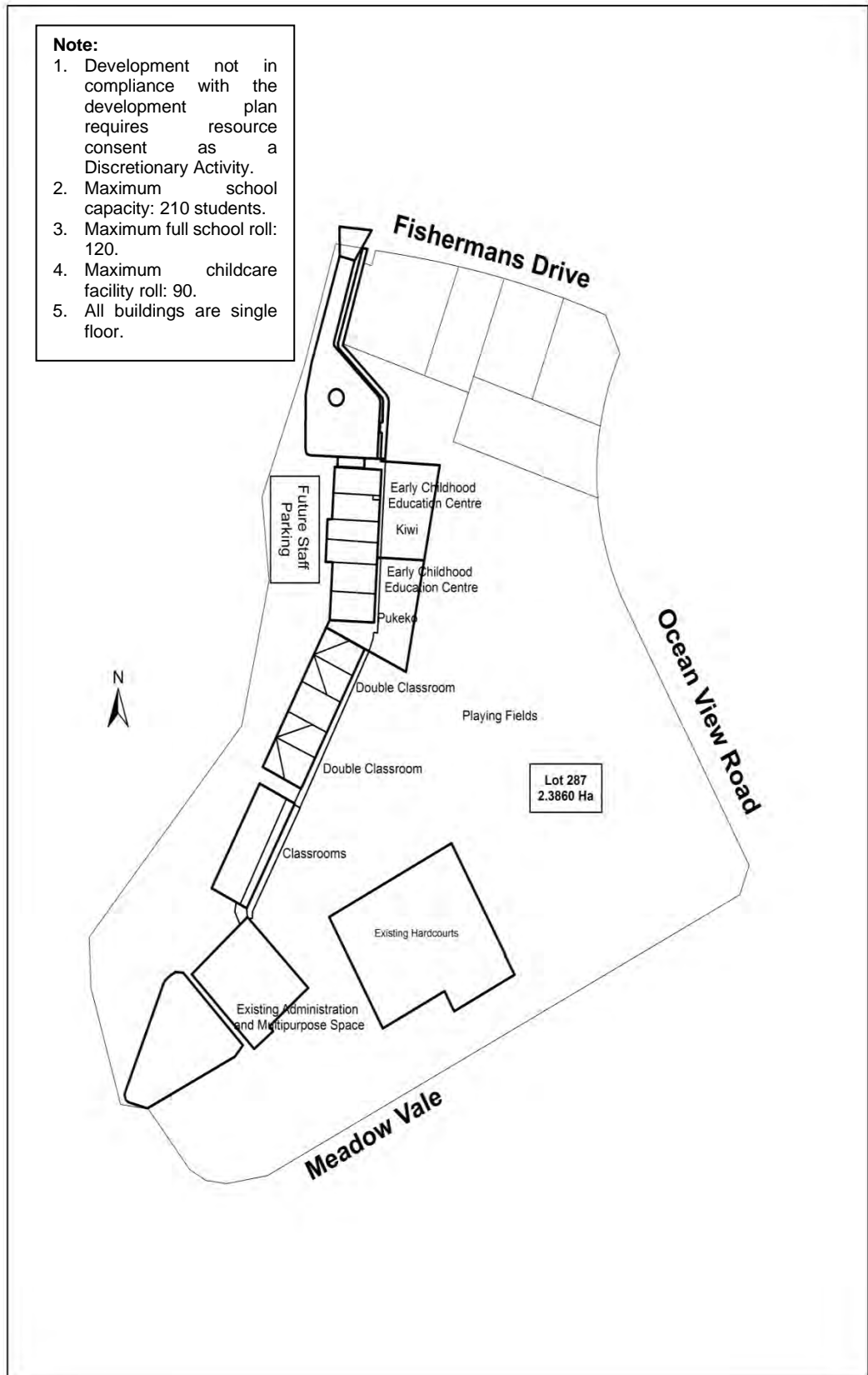
### 9.3 ASSESSMENT CRITERIA—DISCRETIONARY ACTIVITIES / NON-COMPLYING ACTIVITIES

See Section 3.7

# 9.4 APPENDICES

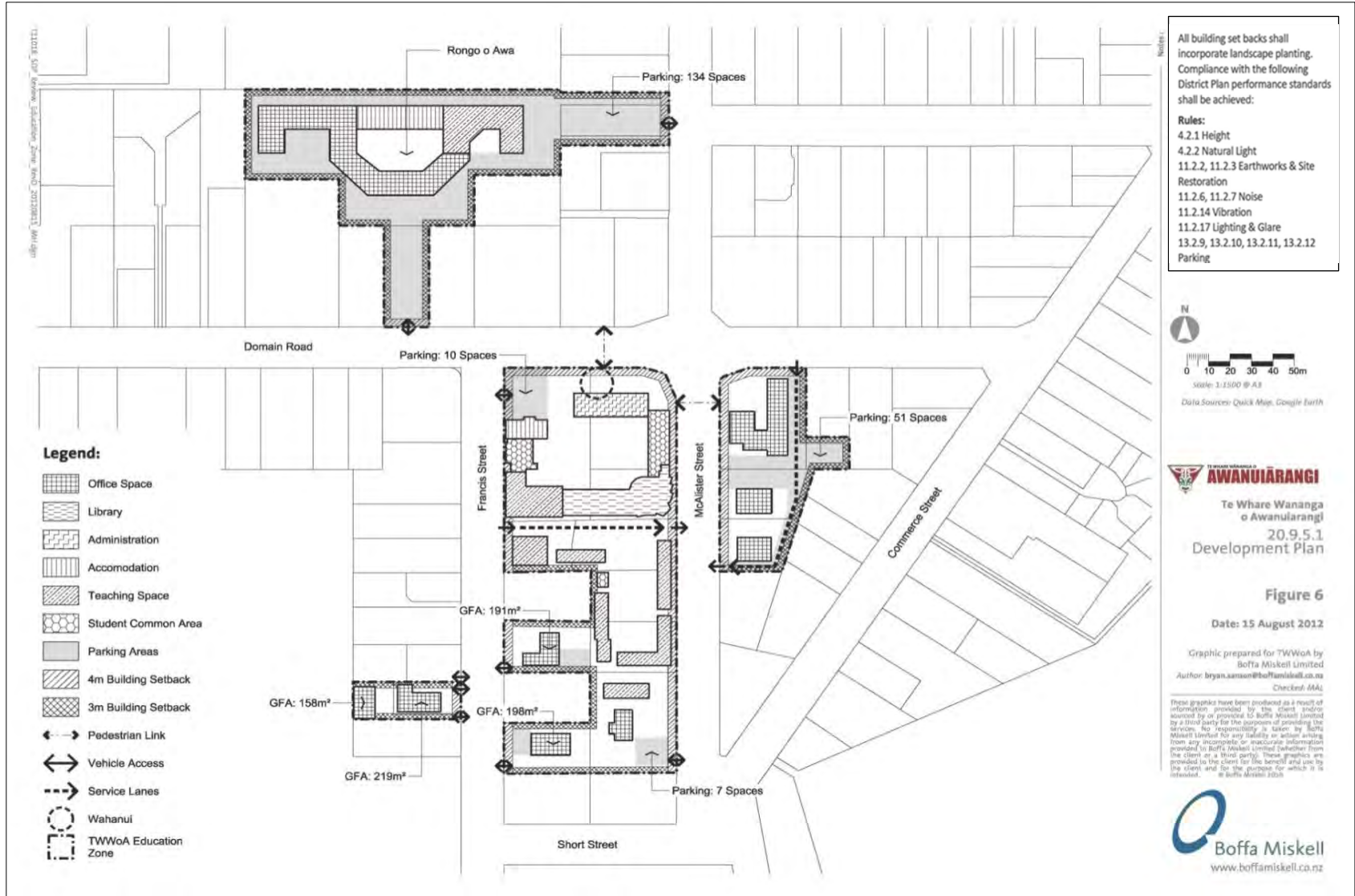
## 9.4.1 Seventh Day Adventist School Development Plan





9.4.3

Te Whare Wānanga O Awanuiārangī Development Plan



9.4.4

St Joseph School (Whakatāne) Development Plan

