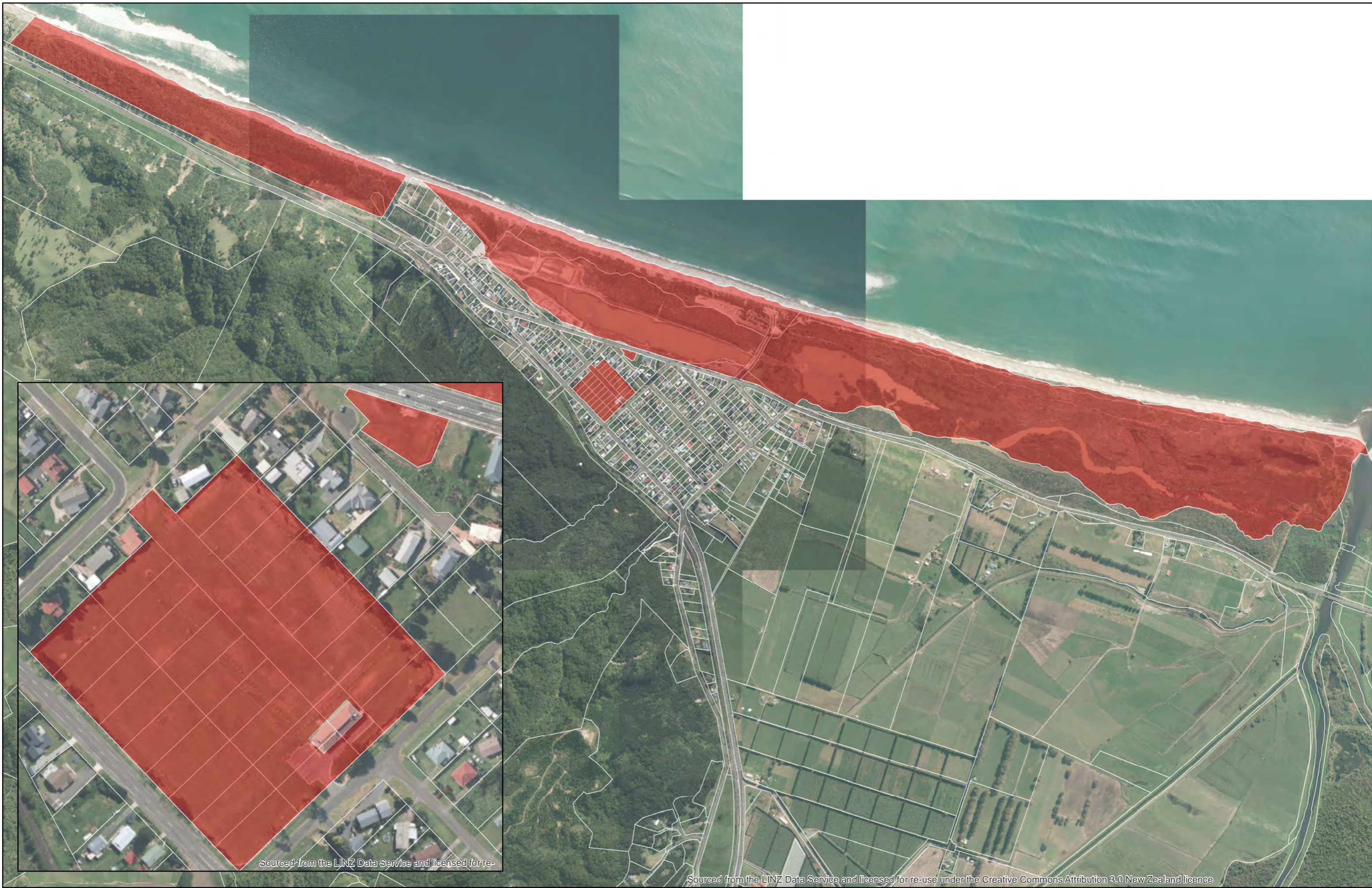


SCHEDULE 2

Alcohol Control Maps



Sourced from the LINZ Data Service and licensed for re-

Sourced from the LINZ Data Service and licensed for re-use under the Creative Commons Attribution 3.0 New Zealand licence



Path: G:\DATA\GIS\ArcGIS\Maps\Policy\LiquorBanAreas2017.mxd

Date of issue: 29/11/2017

Matatā



DISCLAIMER: While Whakatane District Council (WDC), has exercised all reasonable skill and care in controlling the contents of this information, WDC gives no warranty in relation to the material, including its accuracy, reliability and suitability and accepts no liability whatsoever in relation to any loss, damage or other costs (whether direct, indirect or consequential) relating to the use of any material, any compilations, derivative works or modifications of the material. Aerial Photography flown between 2001 and 2016, depending on the area. Parcel boundaries are to be taken as approximate only, not to be substituted for site specific survey. May contain LINZ data: Crown Copyright Reserved. Note: Place names may not conform to LINZ guidelines 2008. Position of all assets & historical sites are approximate, actual positions are to be verified on site.

Scale: 1:13,000

Author: <Add initials>

www.whakatane.govt.nz



Sourced from the LINZ Data Service and licensed for re-

Sourced from the LINZ Data Service and licensed for re-use under the Creative Commons Attribution 3.0 New Zealand licence



www.whakatane.govt.nz

Path: G:\DATA\GIS\ArcGIS\Maps\Policy\LiquorBanAreas2017.mxd

Date of issue: 29/11/2017

Thornton

Scale: 1:17,500

Author: <Add initials>



DISCLAIMER: While Whakatane District Council (WDC), has exercised all reasonable skill and care in controlling the contents of this information, WDC gives no warranty in relation to the material, including its accuracy, reliability and suitability and accepts no liability whatsoever in relation to any loss, damage or other costs (whether direct, indirect or consequential) relating to the use of any material, any compilations, derivative works or modifications of the material. Aerial Photography flown between 2001 and 2016, depending on the area. Parcel boundaries are to be taken as approximate only, not to be substituted for site specific survey. May contain LINZ data: Crown Copyright Reserved. Note: Place names may not conform to LINZ guidelines 2008. Position of all assets & historical sites are approximate, actual positions are to be verified on site.



Sourced from the LINZ Data Service and licensed for re-use under the Creative Commons Attribution 3.0 New Zealand licence



www.whakatane.govt.nz

Thornton to Coastlands Beach

Path: G:\DATA\GIS\ArcGIS\Maps\Policy\LiquorBanAreas2017.mxd

Date of issue: 6/12/2017

Scale: 1:14,000

Author: <Add initials>



DISCLAIMER: While Whakatane District Council (WDC), has exercised all reasonable skill and care in controlling the contents of this information, WDC gives no warranty in relation to the material, including its accuracy, reliability and suitability and accepts no liability whatsoever in relation to any loss, damage or other costs (whether direct, indirect or consequential) relating to the use of any material, any compilations, derivative works or modifications of the material. Aerial Photography flown between 2001 and 2016, depending on the area. Parcel boundaries are to be taken as approximate only, not to be substituted for site specific survey. May contain LINZ data: Crown Copyright Reserved. Note: Place names may not conform to LINZ guidelines 2008. Position of all assets & historical sites are approximate, actual positions are to be verified on site.



Sourced from the LINZ Data Service and licensed for re-use under the Creative Commons Attribution 3.0 New Zealand licence



Coastlands

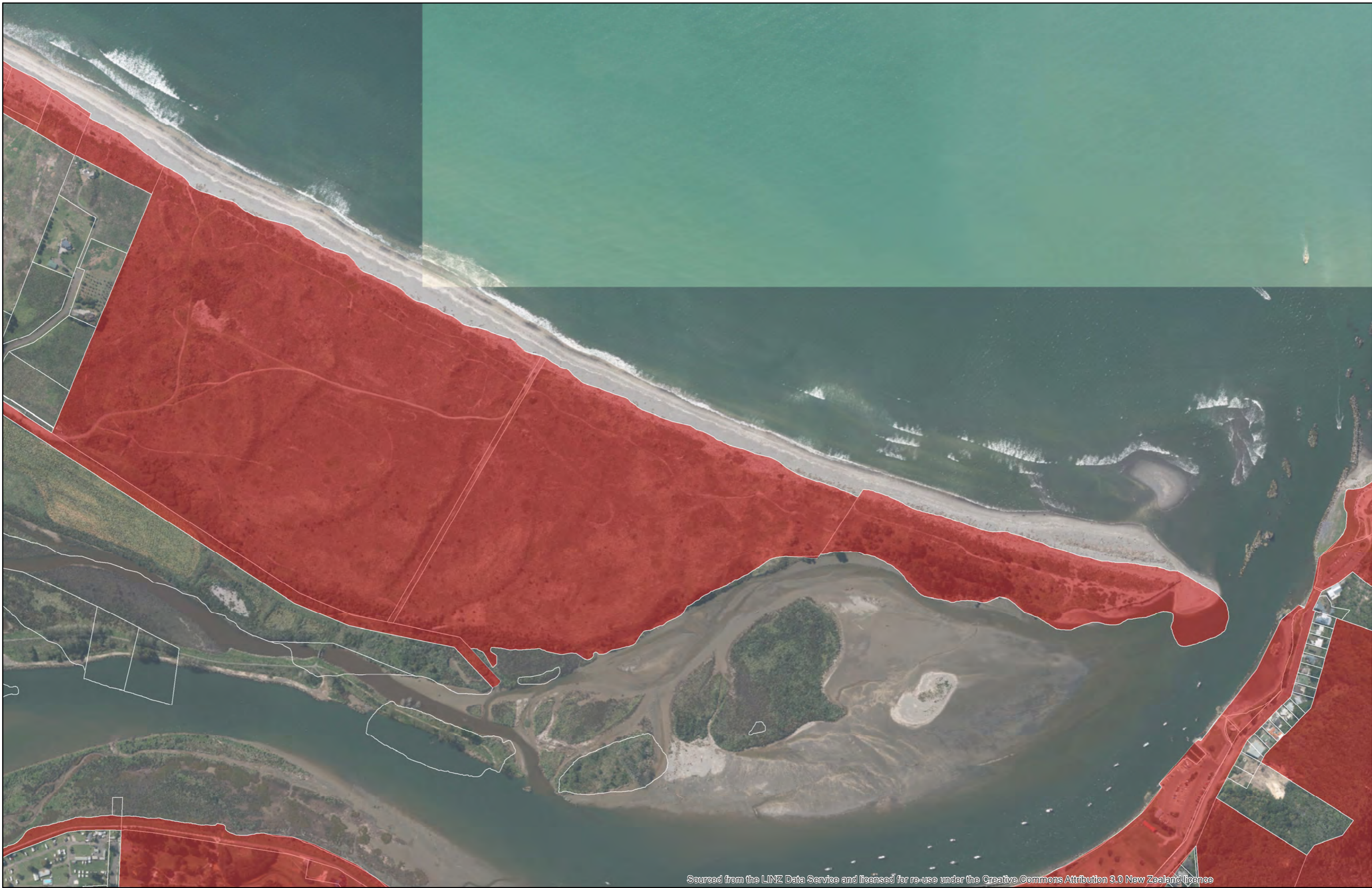
Path: G:\DATA\GIS\ArcGIS\Maps\Policy\LiquorBanAreas2017.mxd
Date of issue: 6/12/2017

Scale: 1:6,000

Author: <Add initials>



DISCLAIMER: While Whakatane District Council (WDC), has exercised all reasonable skill and care in controlling the contents of this information, WDC gives no warranty in relation to the material, including its accuracy, reliability and suitability and accepts no liability whatsoever in relation to any loss, damage or other costs (whether direct, indirect or consequential) relating to the use of any material, any compilations, derivative works or modifications of the material. Aerial Photography flown between 2001 and 2016, depending on the area. Parcel boundaries are to be taken as approximate only, not to be substituted for site specific survey. May contain LINZ data: Crown Copyright Reserved. Note: Place names may not conform to LINZ guidelines 2008. Position of all assets & historical sites are approximate, actual positions are to be verified on site.



Sourced from the LINZ Data Service and licensed for re-use under the Creative Commons Attribution 3.0 New Zealand licence



Piripai

Path: G:\DATA\GIS\ArcGIS\Maps\Policy\LiquorBanAreas2017.mxd

Date of issue: 29/11/2017

Scale: 1:6,000

Author: <Add initials>



DISCLAIMER: While Whakatane District Council (WDC), has exercised all reasonable skill and care in controlling the contents of this information, WDC gives no warranty in relation to the material, including its accuracy, reliability and suitability and accepts no liability whatsoever in relation to any loss, damage or other costs (whether direct, indirect or consequential) relating to the use of any material, any compilations, derivative works or modifications of the material. Aerial Photography flown between 2001 and 2016, depending on the area. Parcel boundaries are to be taken as approximate only, not to be substituted for site specific survey. May contain LINZ data: Crown Copyright Reserved. Note: Place names may not conform to LINZ guidelines 2008. Position of all assets & historical sites are approximate, actual positions are to be verified on site.



Sourced from the LINZ Data Service and licensed for re-use under the Creative Commons Attribution 3.0 New Zealand licence



Path: G:\DATA\GIS\ArcGIS\Maps\Policy\LiquorBanAreas2017.mxd
 Date of issue: 29/11/2017

CBD

Scale: 1:5,000
 Author: <Add initials>



DISCLAIMER: While Whakatane District Council (WDC), has exercised all reasonable skill and care in controlling the contents of this information, WDC gives no warranty in relation to the material, including its accuracy, reliability and suitability and accepts no liability whatsoever in relation to any loss, damage or other costs (whether direct, indirect or consequential) relating to the use of any material, any compilations, derivative works or modifications of the material. Aerial Photography flown between 2001 and 2016, depending on the area. Parcel boundaries are to be taken as approximate only, not to be substituted for site specific survey. May contain LINZ data: Crown Copyright Reserved. Note: Place names may not conform to LINZ guidelines 2008. Position of all assets & historical sites are approximate, actual positions are to be verified on site.



Sourced from the LINZ Data Service and licensed for re-use under the Creative Commons Attribution 3.0 New Zealand licence



Path: G:\DATA\GIS\ArcGIS\Maps\Policy\LiquorBanAreas2017.mxd
Date of issue: 6/12/2017

Warren Cole Walkway

Scale: 1:5,000
Author: <Add initials>



DISCLAIMER: While Whakatane District Council (WDC), has exercised all reasonable skill and care in controlling the contents of this information, WDC gives no warranty in relation to the material, including its accuracy, reliability and suitability and accepts no liability whatsoever in relation to any loss, damage or other costs (whether direct, indirect or consequential) relating to the use of any material, any compilations, derivative works or modifications of the material. Aerial Photography flown between 2001 and 2016, depending on the area. Parcel boundaries are to be taken as approximate only, not to be substituted for site specific survey. May contain LINZ data: Crown Copyright Reserved. Note: Place names may not conform to LINZ guidelines 2008. Position of all assets & historical sites are approximate, actual positions are to be verified on site.



Sourced from the LINZ Data Service and licensed for re-use under the Creative Commons Attribution 3.0 New Zealand licence



Kopeopeo

Path: G:\DATA\GIS\ArcGIS\Maps\Policy\LiquorBanAreas2017.mxd
Date of issue: 29/11/2017

Scale: 1:2,500
Author: <Add initials>

N
DISCLAIMER: While Whakatane District Council (WDC), has exercised all reasonable skill and care in controlling the contents of this information, WDC gives no warranty in relation to the material, including its accuracy, reliability and suitability and accepts no liability whatsoever in relation to any loss, damage or other costs (whether direct, indirect or consequential) relating to the use of any material, any compilations, derivative works or modifications of the material. Aerial Photography flown between 2001 and 2016, depending on the area. Parcel boundaries are to be taken as approximate only, not to be substituted for site specific survey. May contain LINZ data: Crown Copyright Reserved. Note: Place names may not conform to LINZ guidelines 2008. Position of all assets & historical sites are approximate, actual positions are to be verified on site.



Sourced from the LINZ Data Service and licensed for re-use under the Creative Commons Attribution 3.0 New



www.whakatane.govt.nz

Whakatāne - Ōhope



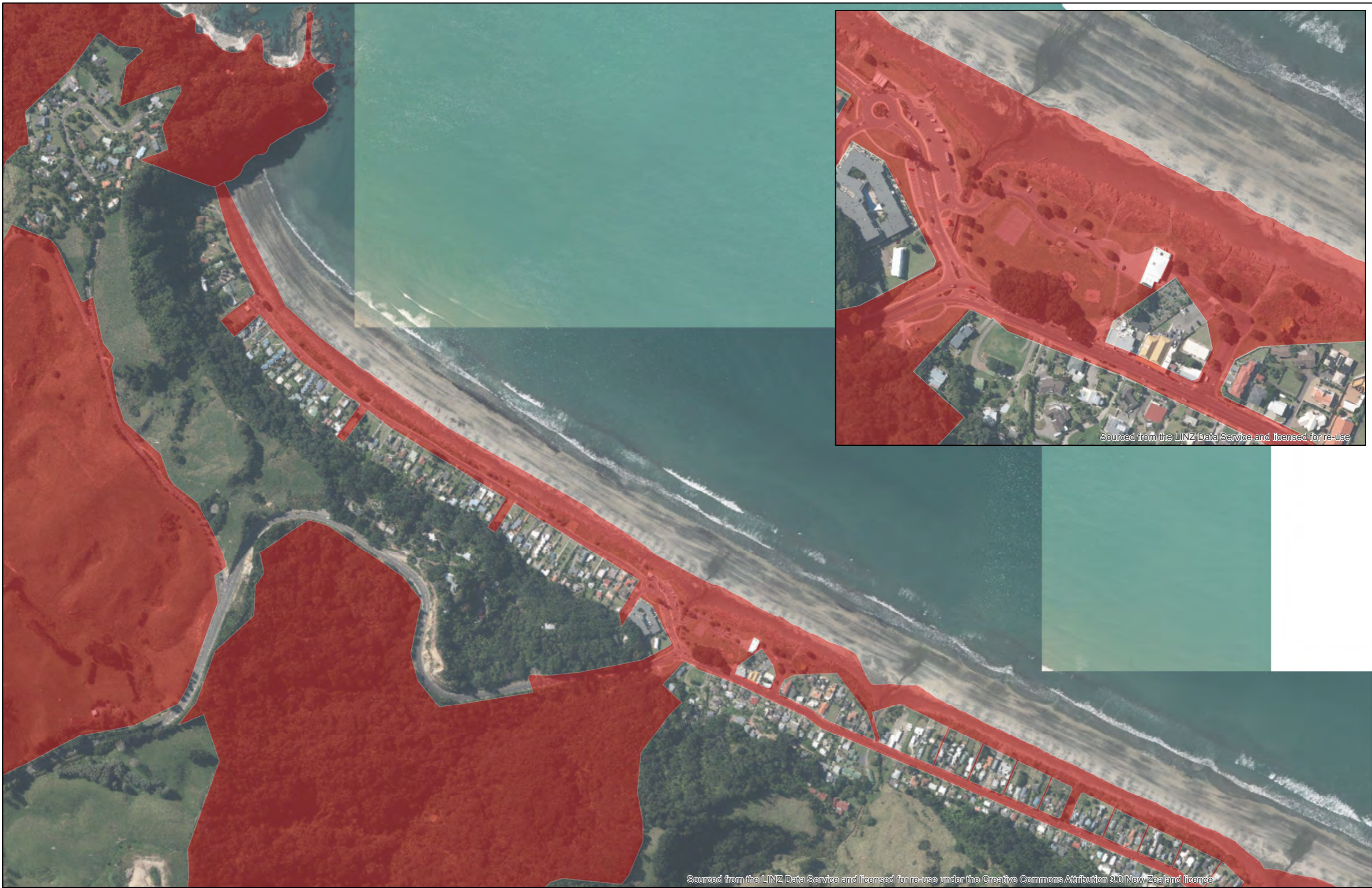
DISCLAIMER: While Whakatane District Council (WDC), has exercised all reasonable skill and care in controlling the contents of this information, WDC gives no warranty in relation to the material, including its accuracy, reliability and suitability and accepts no liability whatsoever in relation to any loss, damage or other costs (whether direct, indirect or consequential) relating to the use of any material, any compilations, derivative works or modifications of the material. Aerial Photography flown between 2001 and 2016, depending on the area. Parcel boundaries are to be taken as approximate only, not to be substituted for site specific survey. May contain LINZ data: Crown Copyright Reserved. Note: Place names may not conform to LINZ guidelines 2008. Position of all assets & historical sites are approximate, actual positions are to be verified on site.

Path: G:\DATA\GIS\ArcGIS\Maps\Policy\LiquorBanAreas2017.mxd

Date of issue: 29/11/2017

Scale: 1:10,000

Author: <Add initials>



Sourced from the LINZ Data Service and licensed for re-use under the Creative Commons Attribution 3.0 New Zealand licence



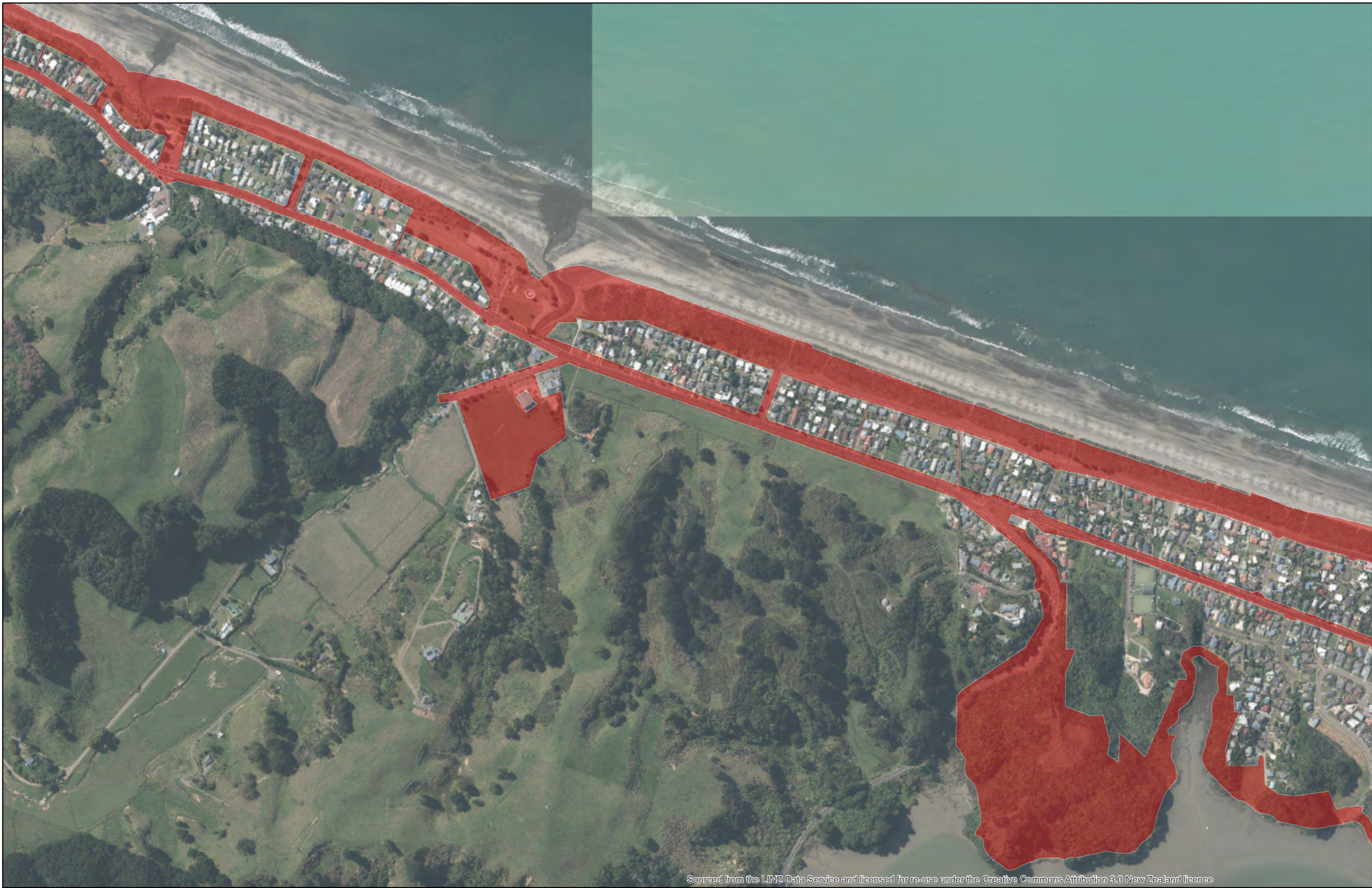
Ohope 01

Path: G:\DATA\GIS\ArcGIS\Maps\Policy\LiquorBanAreas2017.mxd
Date of issue: 6/12/2017

Scale: 1:7,000
Author: <Add initials>



DISCLAIMER: While Whakatane District Council (WDC), has exercised all reasonable skill and care in controlling the contents of this information, WDC gives no warranty in relation to the material, including its accuracy, reliability and suitability and accepts no liability whatsoever in relation to any loss, damage or other costs (whether direct, indirect or consequential) relating to the use of any material, any compilations, derivative works or modifications of the material. Aerial Photography flown between 2001 and 2016, depending on the area. Parcel boundaries are to be taken as approximate only, not to be substituted for site specific survey. May contain LINZ data: Crown Copyright Reserved. Note: Place names may not conform to LINZ guidelines 2008. Position of all assets & historical sites are approximate, actual positions are to be verified on site.



Sourced from the LINZ Data Service and licensed for re-use under the Creative Commons Attribution 3.0 New Zealand licence



Ōhope 02

Path: G:\DATA\GIS\ArcGIS\Maps\Policy\LiquorBanAreas2017.mxd

Date of issue: 29/11/2017

Scale: 1:7,000

Author: <Add initials>

DISCLAIMER: While Whakatane District Council (WDC), has exercised all reasonable skill and care in controlling the contents of this information, WDC gives no warranty in relation to the material, including its accuracy, reliability and suitability and accepts no liability whatsoever in relation to any loss, damage or other costs (whether direct, indirect or consequential) relating to the use of any material, any compilations, derivative works or modifications of the material. Aerial Photography flown between 2001 and 2016, depending on the area. Parcel boundaries are to be taken as approximate only, not to be substituted for site specific survey. May contain LINZ data: Crown Copyright Reserved. Note: Place names may not conform to LINZ guidelines 2008. Position of all assets & historical sites are approximate, actual positions are to be verified on site.



Sourced from the LINZ Data Service and licensed for re-use under the Creative Commons Attribution 3.0 New Zealand licence



Path: G:\DATA\GIS\ArcGIS\Maps\Policy\LiquorBanAreas2017.mxd
Date of issue: 6/12/2017

Ōhope 03

Scale: 1:7,000
Author: <Add initials>



DISCLAIMER: While Whakatane District Council (WDC), has exercised all reasonable skill and care in controlling the contents of this information, WDC gives no warranty in relation to the material, including its accuracy, reliability and suitability and accepts no liability whatsoever in relation to any loss, damage or other costs (whether direct, indirect or consequential) relating to the use of any material, any compilations, derivative works or modifications of the material. Aerial Photography flown between 2001 and 2016, depending on the area. Parcel boundaries are to be taken as approximate only, not to be substituted for site specific survey. May contain LINZ data: Crown Copyright Reserved. Note: Place names may not conform to LINZ guidelines 2008. Position of all assets & historical sites are approximate, actual positions are to be verified on site.



Sourced from the LINZ Data Service and licensed for re-use under the Creative Commons Attribution 3.0 New Zealand licence



Ōhope 04

Path: G:\DATA\GIS\ArcGIS\Maps\Policy\LiquorBanAreas2017.mxd

Date of issue: 29/11/2017

Scale: 1:8,000

Author: <Add initials>



DISCLAIMER: While Whakatane District Council (WDC), has exercised all reasonable skill and care in controlling the contents of this information, WDC gives no warranty in relation to the material, including its accuracy, reliability and suitability and accepts no liability whatsoever in relation to any loss, damage or other costs (whether direct, indirect or consequential) relating to the use of any material, any compilations, derivative works or modifications of the material. Aerial Photography flown between 2001 and 2016, depending on the area. Parcel boundaries are to be taken as approximate only, not to be substituted for site specific survey. May contain LINZ data: Crown Copyright Reserved. Note: Place names may not conform to LINZ guidelines 2008. Position of all assets & historical sites are approximate, actual positions are to be verified on site.



Sourced from the LINZ Data Service and licensed for re-use under the Creative Commons Attribution 3.0 New



Edgecumbe



DISCLAIMER: While Whakatane District Council (WDC), has exercised all reasonable skill and care in controlling the contents of this information, WDC gives no warranty in relation to the material, including its accuracy, reliability and suitability and accepts no liability whatsoever in relation to any loss, damage or other costs (whether direct, indirect or consequential) relating to the use of any material, any compilations, derivative works or modifications of the material. Aerial Photography flown between 2001 and 2016, depending on the area. Parcel boundaries are to be taken as approximate only, not to be substituted for site specific survey. May contain LINZ data: Crown Copyright Reserved. Note: Place names may not conform to LINZ guidelines 2008. Position of all assets & historical sites are approximate, actual positions are to be verified on site.

Path: G:\DATA\GIS\ArcGIS\Maps\Policy\LiquorBanAreas2017.mxd
Date of issue: 29/11/2017

Scale: 1:1,750
Author: <Add initials>

www.whakatane.govt.nz



Sourced from the LINZ Data Service and licensed for re-use under the Creative Commons Attribution 3.0 New Zealand licence



Tāneatua

Path: G:\DATA\GIS\ArcGIS\Maps\Policy\LiquorBanAreas2017.mxd

Date of issue: 29/11/2017

Scale: 1:3,750

Author: <Add initials>



DISCLAIMER: While Whakatane District Council (WDC), has exercised all reasonable skill and care in controlling the contents of this information, WDC gives no warranty in relation to the material, including its accuracy, reliability and suitability and accepts no liability whatsoever in relation to any loss, damage or other costs (whether direct, indirect or consequential) relating to the use of any material, any compilations, derivative works or modifications of the material. Aerial Photography flown between 2001 and 2016, depending on the area. Parcel boundaries are to be taken as approximate only, not to be substituted for site specific survey. May contain LINZ data: Crown Copyright Reserved. Note: Place names may not conform to LINZ guidelines 2008. Position of all assets & historical sites are approximate, actual positions are to be verified on site.



Sourced from the LINZ Data Service and licensed for re-use under the Creative Commons Attribution 3.0 New Zealand licence



Path: G:\DATA\GIS\ArcGIS\Maps\Policy\LiquorBanAreas2017.mxd
Date of issue: 29/11/2017

Te Teko

Scale: 1:2,250
Author: <Add initials>



DISCLAIMER: While Whakatane District Council (WDC), has exercised all reasonable skill and care in controlling the contents of this information, WDC gives no warranty in relation to the material, including its accuracy, reliability and suitability and accepts no liability whatsoever in relation to any loss, damage or other costs (whether direct, indirect or consequential) relating to the use of any material, any compilations, derivative works or modifications of the material. Aerial Photography flown between 2001 and 2016, depending on the area. Parcel boundaries are to be taken as approximate only, not to be substituted for site specific survey. May contain LINZ data: Crown Copyright Reserved. Note: Place names may not conform to LINZ guidelines 2008. Position of all assets & historical sites are approximate, actual positions are to be verified on site.



Sourced from the LINZ Data Service and licensed for re-use under the Creative Commons Attribution 3.0 New



Murupara



DISCLAIMER: While Whakatane District Council (WDC), has exercised all reasonable skill and care in controlling the contents of this information, WDC gives no warranty in relation to the material, including its accuracy, reliability and suitability and accepts no liability whatsoever in relation to any loss, damage or other costs (whether direct, indirect or consequential) relating to the use of any material, any compilations, derivative works or modifications of the material. Aerial Photography flown between 2001 and 2016, depending on the area. Parcel boundaries are to be taken as approximate only, not to be substituted for site specific survey. May contain LINZ data: Crown Copyright Reserved. Note: Place names may not conform to LINZ guidelines 2008. Position of all assets & historical sites are approximate, actual positions are to be verified on site.

Path: G:\DATA\GIS\ArcGIS\Maps\Policy\LiquorBanAreas2017.mxd
Date of issue: 29/11/2017

Scale: 1:3,500
Author: <Add initials>

www.whakatane.govt.nz