



# Rangitāiki Community Board Strategic Plan 2019-2022

Approved - 9 September 2020  
Last updated - June 2021

[whakatane.govt.nz](http://whakatane.govt.nz)










Cover Photo: First place winner of the Rangitāiki Photo Challenge 2020  
Photo Credit: Ngaio Pryor-Taare and Joseph Pryor

## Contents

Rangitāiki Community Board Members .....	3
Introduction – <i>Kupu whakataki</i> .....	4
Our ward – <i>Tō mātou rohe</i> .....	4
Map of boundaries – <i>Mahere rohe</i> .....	5
Our vision – <i>Tō mātou tirohanga</i> .....	6
Our history – <i>Tō mātou hītori</i> .....	6
Our direction – <i>Tō mātou ahunga</i> .....	6
Pou – Focus Area 1 .....	7
SOCIAL NEEDS: TANGATA ORA – Vibrant Communities of Rangitāiki .....	7
Pou – Focus Area 2 .....	9
ECONOMIC NEEDS: PAKIHI ORA – Thriving, well supported local businesses .....	9
Pou – Focus Area 3 .....	10
ENVIRONMENTAL NEEDS: WHENUA ORA - Potential of Land and Water within our Rangitāiki Ward .....	10
Pou – Focus Area 4 .....	11
CULTURAL NEEDS: AHUERA ORA - Uniting through opportunities that provide understanding, sharing and learning .....	11
Development – <i>Whakapiki pūkenga</i> .....	12



# Rangitāiki Community Board Members

2019-2022	NAME AND CONTACT DETAILS
	<b>Kris Byrne – Chairperson</b> Otakiri E. byrnefamily64@xtra.co.nz M. 027 634 8911
	<b>Leeann Waaka – Deputy Chairperson</b> Edgecumbe E. leeann.waaka76@gmail.com M. 021 674 472
	<b>Gavin Dennis – Councillor</b> Matatā E. gavin.dennis@whakatane.govt.nz M. 027 327 0597
	<b>Graeme Bourk</b> Kawerau E. gbourk@gmail.com M. 027 495 2215
	<b>Alison Clark</b> Onepu E. gumfields@netsmart.net.nz H. 07 3228 401
	<b>Evan Harvey</b> Edgecumbe E. harveysejdm@gmail.com M. 027 275 0285
	<b>Pouroto Ngaropo</b> Manawahe E. iramoko.marae@gmail.com M. 021 820 926

The Youth Council representatives assigned to the Board for 2021 are:

- Ms Talei Bryant ([talei.bryant@gmail.com](mailto:talei.bryant@gmail.com))
- Michael Tuwairua ([michaeljohntuwairua@gmail.com](mailto:michaeljohntuwairua@gmail.com)).

# Introduction – *Kupu whakataki*

Community boards were created by the local government reforms in 1989 and are designed to bring government closer to communities. As at 2019, there are 110 community boards that operate in both urban and rural areas within local authorities throughout New Zealand. Board Members are elected every three years along with all other elected members. Through being successfully elected, community board members have been given the trust of local citizens to make decisions on their behalf and exercise community leadership.

The responsibilities and powers of the Rangitāiki Community Board are delegated by the Whakatāne District Council. Our Community Board makes local government more accessible; we advocate and champion for the Rangitāiki ward and keep 'the local' in local. We help the Council deal with diversity in our communities and we help raise ratepayer awareness of services, issues and events.

As detailed in [Clause 52](#) of the Local Government Act 2002, the role of a community board is to:

- a. Represent, and act as an advocate for, the interests the community.
- b. Consider and report on all matters referred to it by Council, or any matter of interest or concern to the community.
- c. Maintain an overview of services provided by the Council within the community.
- d. Prepare an annual submission to the Council for expenditure within the community.
- e. Communicate with community organisations and special interest groups within in the community.
- f. Undertake any other responsibilities that are delegated to it by the Council.

## Our ward – *Tō mātou rohe*

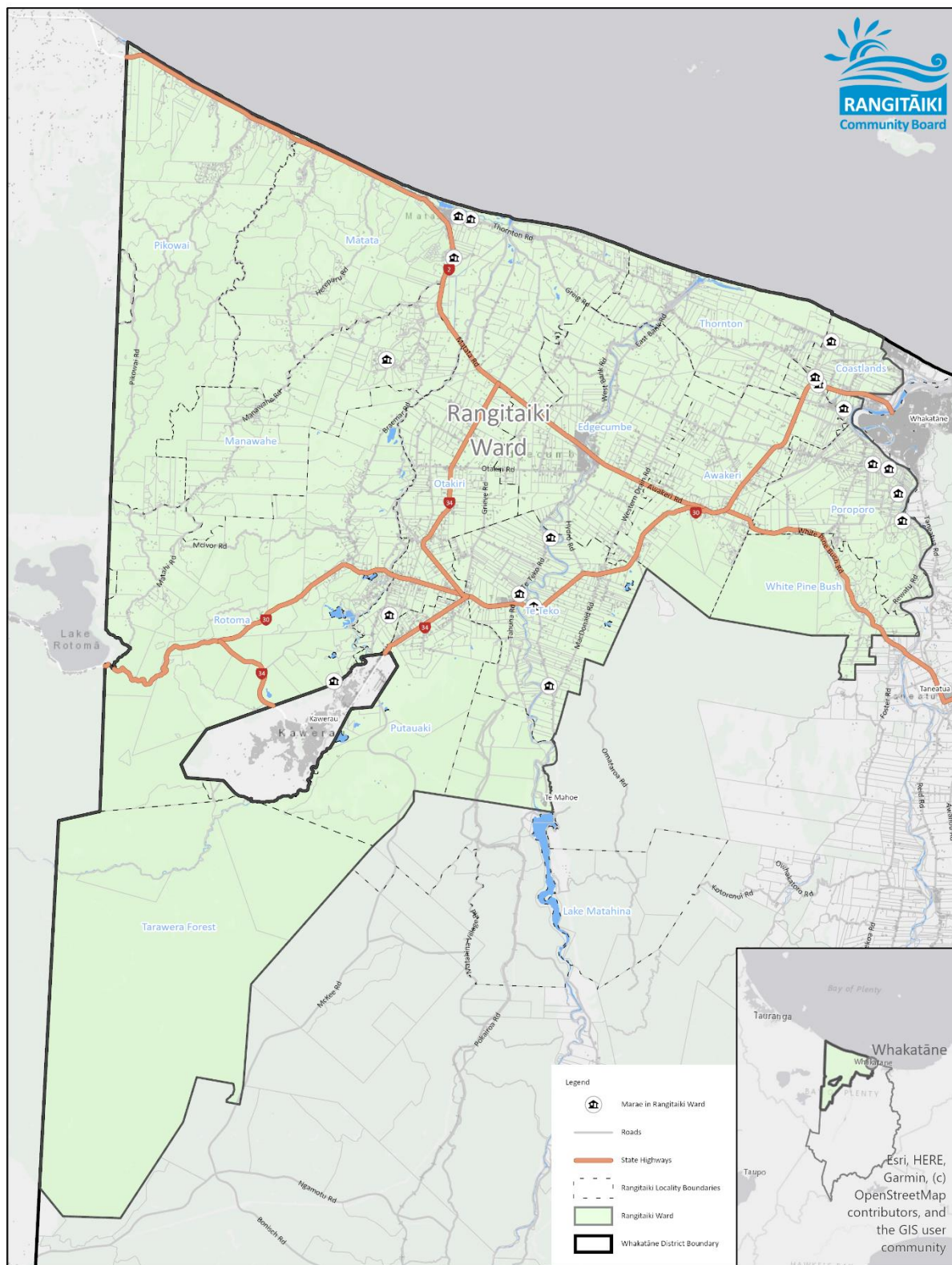
Our ward includes the communities of Awakaponga, Awakeri, Coastlands, Edgecumbe, Manawahe, Matatā, Onepū/Braemar, Otakiri, Paroa, Pikowai, Poroporo, Te Mahoe, Tai Whakaea, Te Teko and Thornton.

The Rangitāiki ward is not a single community of interest. Geographically, communities are diverse in terms of farming practice, lifestyle, access, culture, employment, education, opportunities, and other issues such as levels of crime. One part of the community could have significant differences and desires from another.

The Board meets every 7 weeks. Four meetings are held at the Edgecumbe Library and the remainder are held at various locations within the ward. Meetings are typically on a Wednesday and always start at 5:30 pm. Meeting locations are publicised on the Councils webpage; so that is the place to go for information on meeting dates and locations (<https://www.whakatane.govt.nz/rangitaiki-community-board>).

A map showing the ward boundaries and the different areas within the ward follows.

# Map of boundaries – Mahere rohe



	<p>Rangitaiki Community Board</p> <p>Path: G:\DATA\GIS\ArcGIS\MapServer\Wards\Rangitaiki\CommunityBoard\Map2020\RangitaikiWardCommunityBoardMap2020.aprx</p> <p>Date of issue: 3/08/2020</p>	<p>Scale: 1:194,754</p> <p>Author: arthurd</p>	<p>DECLAIMER: While Whakatane District Council (WDC), has exercised all reasonable skill and care in controlling the contents of this information, WDC gives no warranty in relation to the material, including its accuracy, reliability and suitability and accepts no liability whatsoever in relation to any loss, damage or other costs (whether direct, indirect or consequential) relating to the use of any material, any compilations, derivative works or modifications of the material. Aerial Photography flown between 2001 and 2016, depending on the area. Parcel boundaries are to be taken as approximate only, not to be substituted for site specific survey. May contain LINZ data: Crown Copyright Reserved. Note: Place names may not conform to LINZ guidelines 2006. Position of all assets / historical sites are approximate, actual positions are to be verified on site.</p>
--	--	--	--

## Our vision – *Tō mātou tirohanga*

*“Waiho ake Ma te au o Rangitāiki koe e kawē atu ki tua o Pae.”*

*“Let the flow, current of the Rangitāiki river, guide you to the horizon and beyond.”*

## Our history – *Tō mātou hītori*

**To be added** - History of the Rangitāiki and the mauri where it starts, from the source to sea

## Our direction – *Tō mātou ahunga*

*By Rangitāiki, For Rangitāiki, One Voice, One community, rowing our canoe in strength in unison and strength to achieve all things in the present and the future.*

*Nā Rangitāiki, mō Rangitāiki, he reo kotahi, he hāpori kotahi, e hoe tahi ana tō tātou waka kia tutuki ai ngā whāinga inamata me ngā whāinga.*

Our Strategic Plan helps set our direction to:

- Create a vision for the Rangitāiki community.
- Set our Pou (Focus Areas) and our Objectives that will drive the Board’s projects.
- Provide the basis for the Board’s submissions.
- Acknowledge the Treaty of Waitangi, Te Reo Māori and Tikanga Māori.

The Strategic Plan a living document which is monitored and reviewed regularly.



*‘Missing You’*

*Photo credit: Corina Niven*

# Pou – Focus Area 1

## SOCIAL NEEDS: TANGATA ORA – Vibrant Communities of Rangitāiki

OUR OBJECTIVES	OUR ACTIONS	TIMEFRAME
<p><b>We have Active, Healthy and Safe communities</b></p> <p><i>Support and promote our communities activities, events. Identify new opportunities that support the wellbeing and growth of our communities.</i></p>	<ul style="list-style-type: none"> <li>• Providing discretionary funding support to local community programmes, events and activities</li> <li>• Support the annual National Volunteer Recognition Week to acknowledge and thank our community volunteers</li> <li>• Promote and support local led events as they arise</li> <li>• Support initiatives/programmes that encourage our communities to be prepared and resilient in event of a natural disaster</li> <li>• Support joint project opportunities/events as a Combined Community Board that align with our community goals</li> <li>• Look for opportunities to support national events in our ward</li> </ul>	<p>YEAR 1 / YEAR 2 / YEAR 3 (2019 – 2021)</p> <p>YEAR 2 / YEAR 3 (2020 -2021)</p> <p>AS OPPORTUNITIES ARISE</p>
<p><b>Connecting and Communicating with our Communities:</b></p> <p><i>Through a centralised communication portal tool, we are able to reach all sectors of our communities and keep them well informed and connected</i></p>	<ul style="list-style-type: none"> <li>• Coordinate a session with WDC Communications staff to seek advice and guidance on how to create a centralised communication portal, including options on how to best utilise social media.               <ol style="list-style-type: none"> <li>a. Monitoring posts to RCB page and respond within appropriate and timely timeframes</li> <li>b. Branding</li> <li>c. Centralised management and consistency</li> </ol> </li> <li>• Investigate other communication sources that currently exist in our communities i.e. Community Newsletters and FB pages. This will provide other options we can utilise to communicate and inform our communities when and if required.</li> </ul>	<ul style="list-style-type: none"> <li>• YEAR 1 / YEAR 2 (2019 – 2020)</li> </ul>





# Pou – Focus Area 2

## *ECONOMIC NEEDS: PAKIHI ORA – Thriving, well supported local businesses*

OUR OBJECTIVES	OUR ACTIONS	TIMEFRAME
<p><b>Economic Growth of our Rural Community</b></p> <p><i>Supporting, promoting and advocating on behalf of our local businesses</i></p>	<ul style="list-style-type: none"> <li>• Share information from WDC, EPIC, EB Chamber of Commerce, Toi EDA, Farmers Association, Tourism and Innovation Industry to support our local businesses i.e.               <ol style="list-style-type: none"> <li>a. Buy local campaign</li> <li>b. Offer support as it arises for the business after 5 Conduit (Rangitāiki Business Hub)</li> <li>c. Support new initiatives that encourage innovation i.e. evenings with speakers on topics like regenerative farming</li> </ol> </li> </ul>	<p>YEAR 1 / YEAR 2 / YEAR 3 (2019 – 2021)</p>



*Viewing the Rangitāiki River and enjoying the outdoors  
Photo credit: Tania Bruning*

# Pou – Focus Area 3

## ENVIRONMENTAL NEEDS: WHENUA ORA -

### Potential of Land and Water within our Rangitāiki Ward

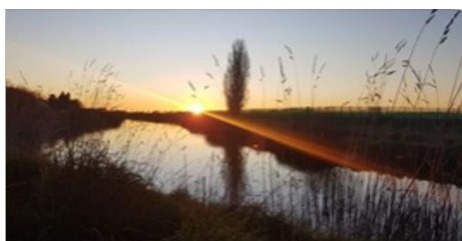
OUR OBJECTIVES	OUR ACTIONS	TIMEFRAME
<p><b>Environmental Sustainability</b></p> <p><i>Identify opportunities that support positive use and care of our significant environmental and cultural sites/natural resources – with the aim to protect and retain</i></p>	<ul style="list-style-type: none"> <li>• Attend environmental awareness meetings that pertain to our Rangitāiki ward</li> <li>• Submission made to WDC to include the request to be informed about any land that comes up for Treaty settlements across the Rangitāiki rohe.</li> <li>• Seek opportunities to work in collaboration with BOPRC, DOC, Te Runanga o Ngati Awa, Ngāti Rangitihī, Ngāti Tūwharetoa Rangitāiki Hapū Coalition and other groups to:               <ol style="list-style-type: none"> <li>a. Promote opportunities that build an awareness of all our significant environmental and cultural sites/assets of the Rangitāiki.</li> <li>b. Support community led initiatives/activities that focus on the care of our Whenua and Awa i.e. restoration planting or enhancement projects etc.</li> </ol> </li> </ul>	<p>YEAR 1 / YEAR 2 / YEAR 3 (2019 – 2021)</p>
<p><b>Infrastructure Projects</b></p> <p><i>Identify and advocate for improvements needed including opportunities that enhance our communities infrastructure and facilities</i></p>	<ul style="list-style-type: none"> <li>• Advocate through representation, Local Council’s LTP and Annual Plan Submission process to ensure that maintaining and improving our local natural resources, assets and facilities, including seeking support for new housing subdivisions in Rangitāiki ward</li> </ul>	<p>YEAR 1 / YEAR 2 / YEAR 3 (2019 – 2021)</p>

# Pou – Focus Area 4

## CULTURAL NEEDS: AHUERA ORA -

*Uniting through opportunities that provide understanding, sharing and learning*

OUR OBJECTIVES	OUR ACTIONS	TIMEFRAME
<p><b>Growing our Cultural Identity</b></p> <p><i>Through support and active participation in opportunities that help grow our knowledge and understanding of our culturally diverse communities</i></p>	<ul style="list-style-type: none"> <li>• Work with WDC staff to provide our Board with an up to date report of our stats/data across our ward to get a better understanding of the demographics of our communities</li> <li>• Seek, promote and support opportunities to acknowledge and celebrate all sectors of our diverse and multicultural communities by:               <ul style="list-style-type: none"> <li>a. Promoting cultural education opportunities e.g. Te Reo classes</li> <li>b. Public open days to experience our local Marae</li> <li>c. Bilingual signage</li> <li>d. Multicultural celebration events/days</li> </ul> </li> <li>• Board to undertake an in-house history learning session, sharing the history of the land across the ward</li> </ul>	<p>YEAR 1 / YEAR 2 / YEAR 3 (2019 – 2021)</p>



# Development – *Whakapiki pūkenga*

Development of the Community Board Elected Members relates across all of the focus areas.

OUR OBJECTIVES	OUR ACTIONS	TIMEFRAME
<p><b>Support Development of Board Members</b></p> <p><i>Support our Board Members to undertake appropriate upskilling and training</i></p>	<ul style="list-style-type: none"> <li>• Board Members attend a social activity/event together to encourage and support team building and relationships</li> <li>• Board representation at Zone 2 meetings, LGNZ conferences</li> <li>• Investigate opportunities for board members who are interested in learning new skills to support them in their role</li> </ul>	<p>YEAR 1 / YEAR 2 / YEAR 3 (2019 - 2021)</p> <p>YEAR 2 / YEAR 3 (2020 – 2021)</p> <p>CO-ORDINATE &amp; ATTEND TRAINING OPPORTUNITIES THAT ARISE</p>



*‘Reflections on the Rangitāiki’*  
Photo credit: Joelle Walker