

CONTRACTOR SHALL VERIFY ALL DIMENSIONS ON SITE
REVISIONS

CLIENT

CONTRACTOR

CONSULTANTS

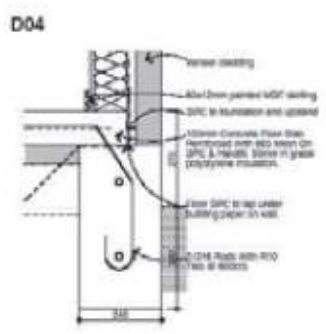
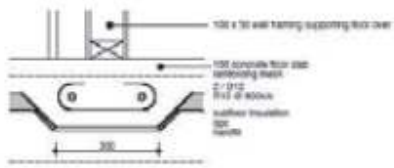
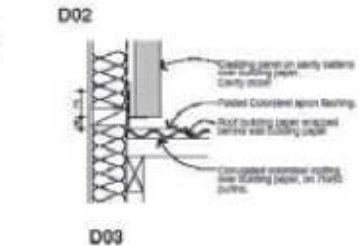
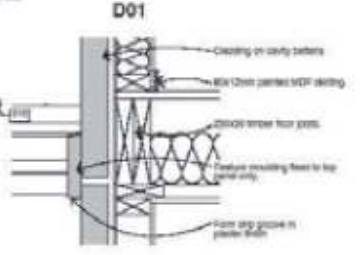
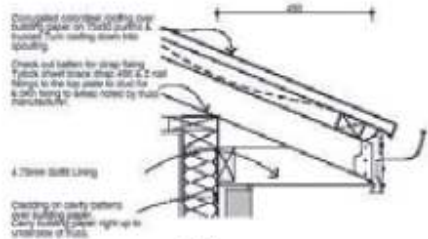
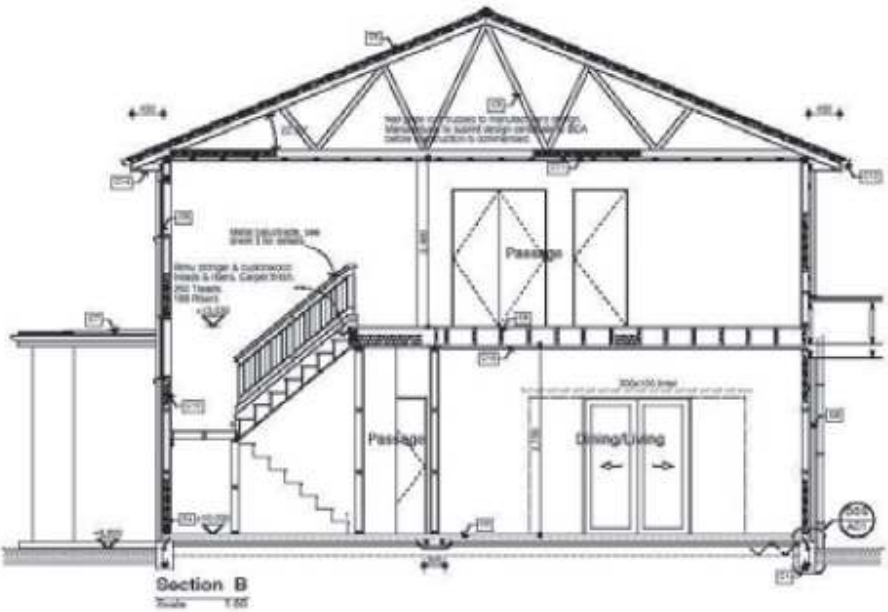
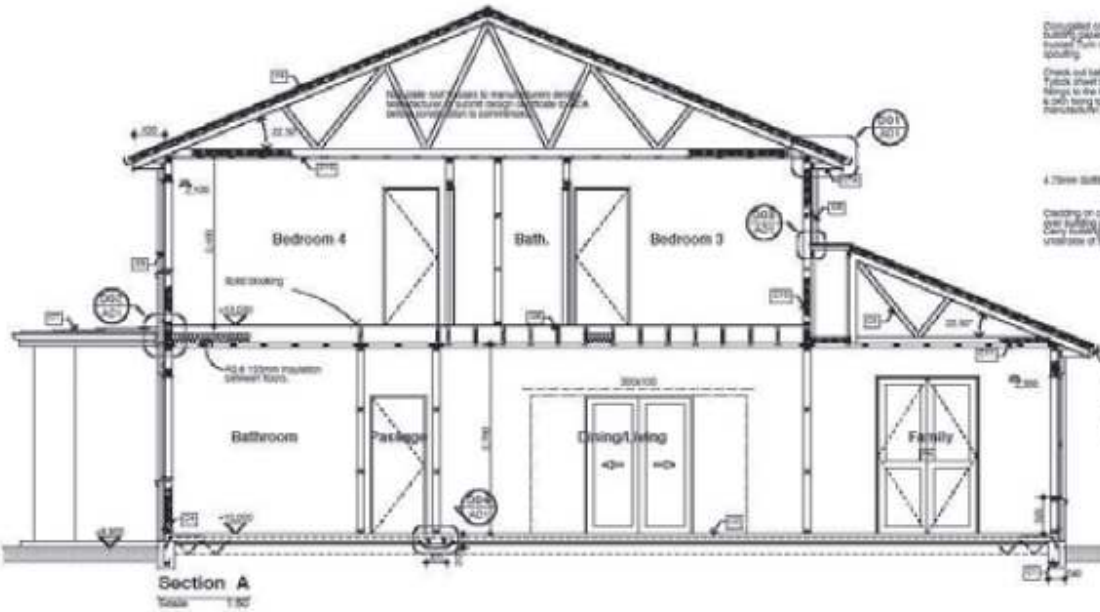
PROPOSED NEW DWELLING
ABC STREET
CHRISTCHURCH

Section / Details

SCALE	1:50 & 1:20
DATE	02 February 18
JOB No.	0715
DRAWN	CT
CHECKED	KA
STATUS	CONSTRUCTION
DRAWING No.	REVISION
A01	(A)

KEY NOTES

- [C1] 2.014 size & R15 Ins @ 80mm
- [C2] 120mm concrete slab, reinforced with R6C 400 mesh. 50mm in place polyethylene insulation on 2.0mm heavy polythene drip. 20mm washed coarse & compacted sand.
- [C3] 200mm floor joists at 400mm, with ceiling of gypsum, under wall paper & two coats over a damp coating (at 800mm)
- [C4] 20mm Particle board flooring
- [C5] 120mm studs @ 600mm, 20mm external wall cavity panels with 50mm batt @ 1200mm max. Additionally one 20mm pine stud & concrete nails @ 800mm & 1200mm fasteners to floor joists @ 800mm. No contact with to base of studs at roof ends of studs.
- [C6] 20mm batt @ 600mm depth by manufacturer. No gaps with batt. Monocouple batt. 20mm & 10mm batts. Battling one end not per batt length.
- [C7] Composite corr. roofing with supporting 40mm 120mm joists @ 600mm. Battling batts not from top & bottom joints with two end batts.
- [C8] 1.2mm rubber membrane over 15mm HD flexible polyurethane or HD 1.150mm mineral particle @ 600mm, sealing @ 600mm.
- [C9] 20mm Fibreglass wool batt to HD 1 systems over building paper. Appropriate plastic vapour.
- [C10] Powder Coated aluminium windows treated their inside, double glaze.
- [C11] 30mm fire glass wool insulation FGA.
- [C12] 150mm fire glass wool insulation FGA.
- [C13] 150mm fire glass wool insulation FGA.
- [C14] 150mm fire glass wool insulation FGA.
- [C15] 150mm mineral wool insulation FGA.
- [F1] 20mm plasterboard level 1 finish, water resistant (external) to all verandas, stoops & laundry areas.
- [F2] 20mm substrate underneath ceiling.
- [F3] 20mm HD MSF to joint finish.
- [] Safety glass entry doors to NZS 4833.



D05