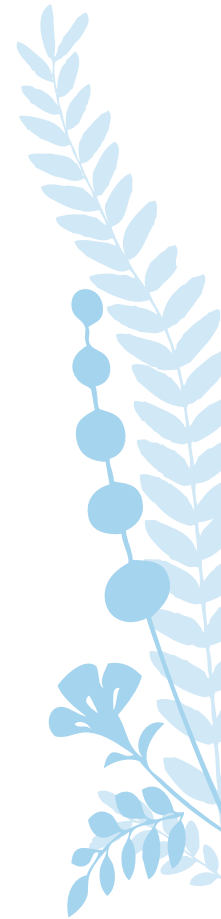




The chapel at the Hillcrest Crematorium has seating capacity for 50 people.



FURTHER INFORMATION:

This brochure is published by the Whakatāne District Council and is intended to provide general information only. It is not intended as a legal document and may not be applicable to all circumstances.

WHAKATĀNE DISTRICT COUNCIL

Commerce St, Private Bag 1002,
Whakatāne 3158, New Zealand
P 07 306 0500 F 07 307 0718

MURUPARA SERVICE CENTRE

Civic Square, Pine St,
Murupara, New Zealand
P 07 366 5896 F 07 366 5897

UPDATED: FEBRUARY 2015



www.whakatane.govt.nz



COUNCIL FACILITIES

Hillcrest Crematorium

www.whakatane.govt.nz



HILLCREST CREMATORIUM

The Hillcrest Crematorium is situated within the Hillcrest Cemetery, a lawn cemetery set on the hills between Whakatāne and Ōhope. The cemetery is located in a very peaceful area surrounded by farmland and features large trees and gardens.

CHAPEL

The crematorium design is based upon a waka theme and this modern facility incorporates a 50-seat chapel. Bookings for use of the chapel can only be made through your funeral director or the Whakatāne District Council. Please note that there are no catering facilities available at the chapel.

The chapel is available for committals or full memorial services Monday to Saturday, including Public Holidays, from 9am - 4pm. The chapel is not available on Sundays.

HOURS OF OPERATION

Hillcrest Crematorium is open from 9am – 5pm, Monday to Saturday, including public holidays. The last cremation booking time is 4:30pm.

Please note that a surcharge applies for cremations on Saturdays and public holidays. Cremations are not available on Sundays.



BOOKINGS

Arrangements for cremations must be made through a funeral director. The funeral director is required to lodge a Notice of Cremation a minimum of eight working hours before the scheduled cremation, with all of the supporting legal documentation required. Fees and charges for bookings can be found on the Whakatāne District Council website www.whakatane.govt.nz.

DOCUMENTS YOUR FUNERAL DIRECTOR WILL NEED TO SUPPLY

There are a number of forms which must legally accompany any application for cremation. These will be provided by your funeral director for you to complete. Cremations will be carried out only upon receipt of the documentation required by the Whakatāne District Council.

CREMATION PROCEDURE

If a chapel service is not required, your funeral director will deliver your loved one to the Crematorium at the agreed booking time, where a staff member will be in attendance to receive the casket and proceed with the cremation.

PROHIBITED ITEMS

For health and safety reasons, a wide range of items may not be placed in the casket with your loved one. These include: soft toys, alcohol; ammunition or any explosive material; lighters; laptop computers; glass or glass products; and items made from PVC or rubber.

Please talk to your funeral director for full information and guidance about which items may or may not be placed in the casket.

WHAT HAPPENS TO THE ASHES AFTER CREMATION?

Once the cremation is complete, the ashes of your loved one will be placed in a plastic urn. The urn will be labelled with the name of your loved one and a cremation number linked to Council's statutory records. The ashes will then be returned to the funeral director who applied for the cremation and will not be released to anyone else. Ashes can be collected by your funeral director approximately 48 hours following cremation.

ASH INTERMENTS

Various ash plots are available through the Whakatāne District Council or alternatively, ashes may be interred in burial graves of loved ones who already rest within the cemetery. Ash plot purchases and/or subsequent interments can be arranged through your funeral director, or directly through the Whakatāne District Council Cemeteries Administrator. Interment application forms are available from the Council office, or on-line (go to www.whakatane.govt.nz).

RECORDS

Interment and cremation records are kept at the Whakatāne District Council offices and are available during normal working hours. Records can also be found on the Whakatāne District Council website: www.whakatane.govt.nz

All cremations are carried out in accordance with the Burial & Cremations Act 1964, the Cremations Regulations 1973 and Whakatāne District Council bylaws.