

OVERVIEW PLAN

KEY:

- | | | | |
|--------------------|-----------------------|------------------------------|-------------------------------|
| Major Access Point | Public Boat Launching | Ecological/Wildlife Interest | Play Facilities |
| Car Parking | Visitor Information | Historical Interest | Landmark Feature |
| Picnic Facilities | Vending | Horticultural Interest | Special Recreational Facility |

WHAKATANE RIVER GREENWAYS
CONCEPT PLAN



River Walk and Cycleway Whakatane South Connection

Themes

- High Recreational Values
- Provide expansive view of farmland and Mt. Tarawera and Mt. Putauaki
- Conservation of wetland and ecology



Proposed Enhancements Include

- A. Provide connectivity from Warren Cole Walk and Cycleway from Rowing Club to Ferry Road
- B. Environmental enhancement of wetlands and river margins
- C. Future Option for walkway extension following consultation with adjoining landowners.
- D. Future link Awatapu Drive to Hinemoa Steet and Whakatane South Suburbs

KEY:

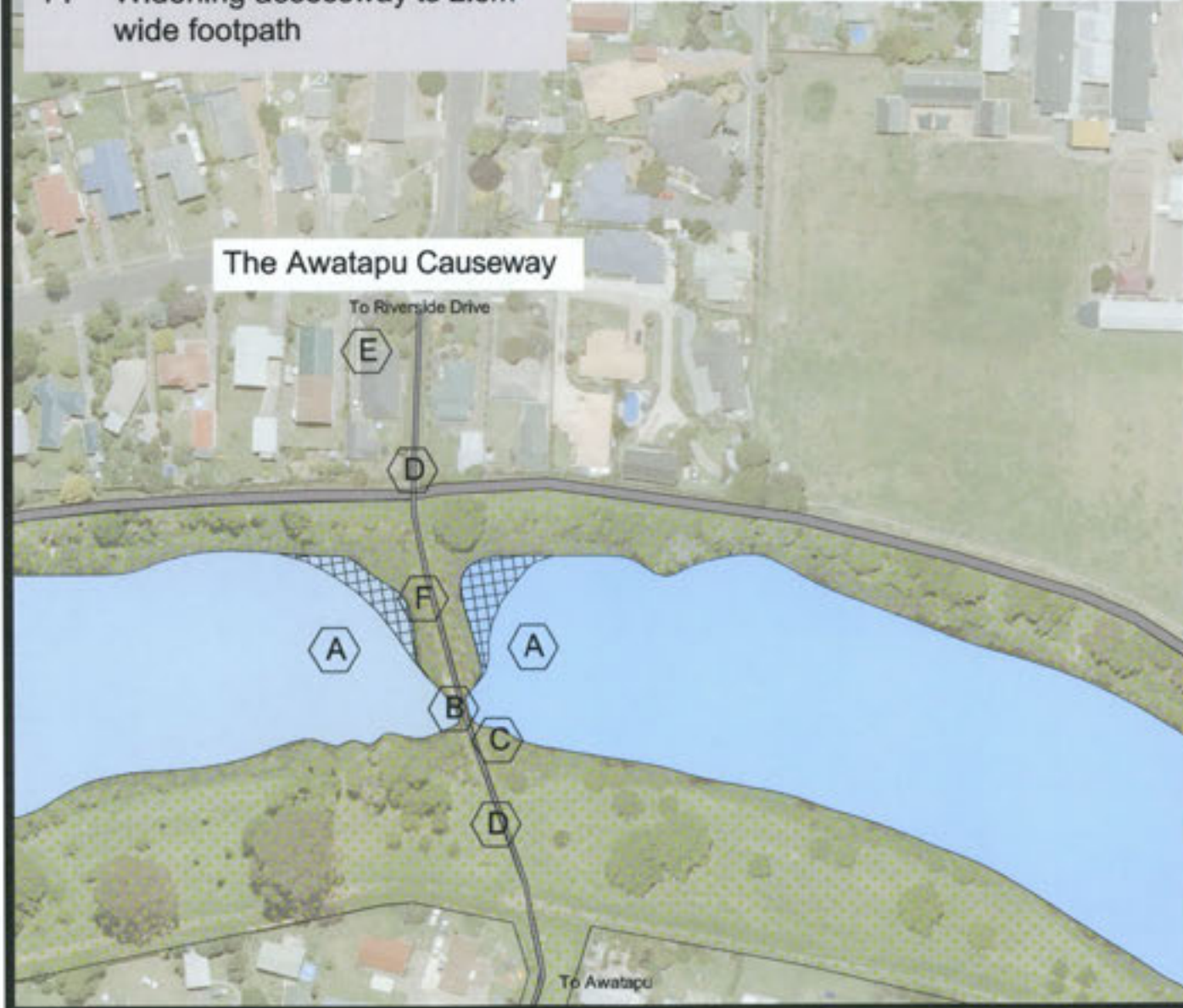
Major Access Point	Public Boat Launching	Ecological/Wildlife Interest	Play Facilities
Car Parking	Visitor Information	Historical Interest	Landmark Feature
Picnic Facilities	Vending	Horticultural Interest	Special Recreational Facility

WHAKATANE RIVER GREENWAYS CONCEPT PLAN



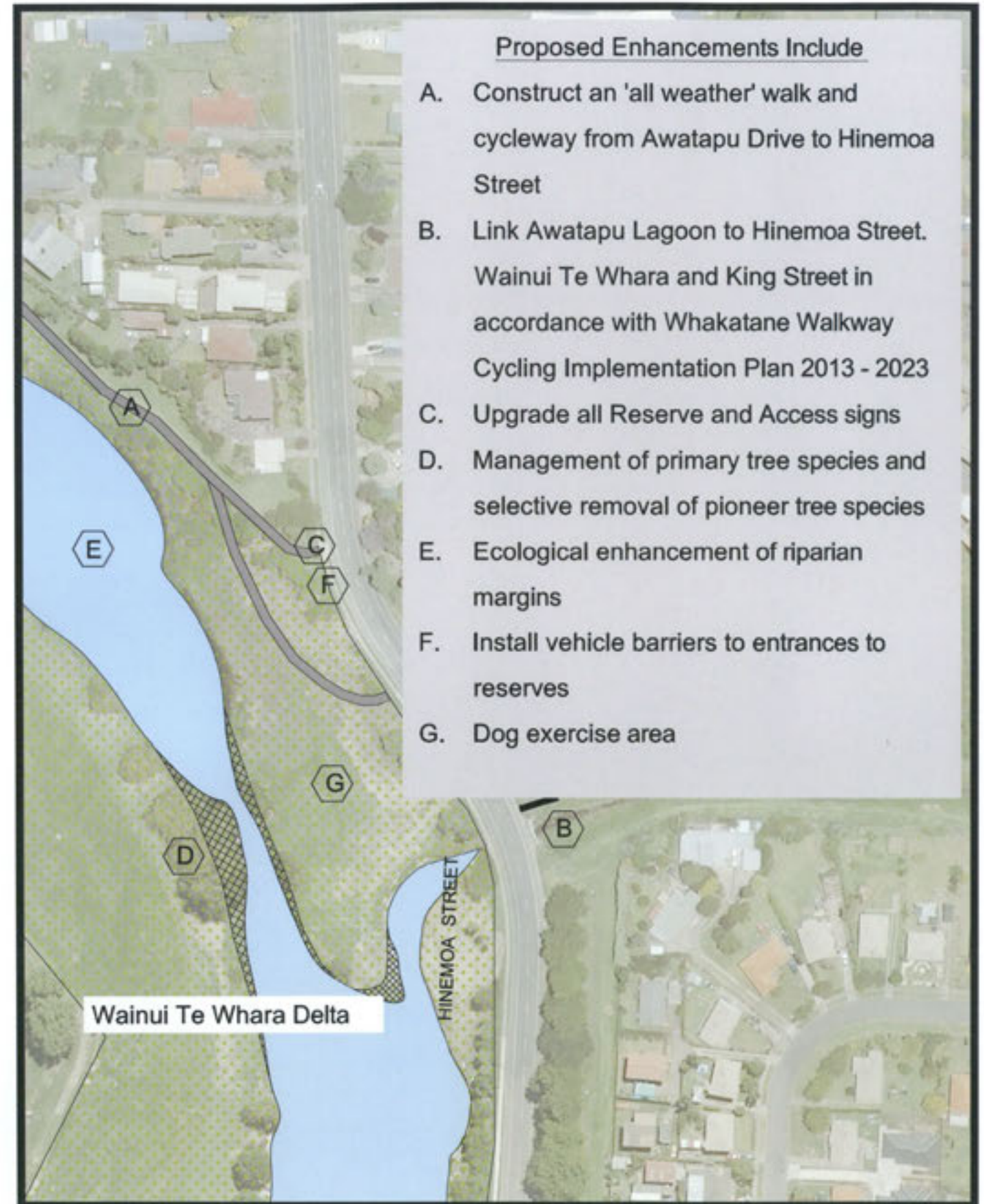
Enhancements For Causeway

- A. Infill Lagoon to create greater visibility and eliminate dead spots in the lagoon
- B. Remove *Phormium tenax* along margins of causeway
- C. Manage silt and debris through culvert
- D. Improve lighting
- E. Access signage
- F. Widening accessway to 2.5m wide footpath



Proposed Enhancements Include

- A. Construct an 'all weather' walk and cycleway from Awatapu Drive to Hinemoa Street
- B. Link Awatapu Lagoon to Hinemoa Street. Wainui Te Whara and King Street in accordance with Whakatane Walkway Cycling Implementation Plan 2013 - 2023
- C. Upgrade all Reserve and Access signs
- D. Management of primary tree species and selective removal of pioneer tree species
- E. Ecological enhancement of riparian margins
- F. Install vehicle barriers to entrances to reserves
- G. Dog exercise area



KEY:

Major Access Point	Public Boat Launching	Ecological/Wildlife Interest	Play Facilities
Car Parking	Visitor Information	Historical Interest	Landmark Feature
Picnic Facilities	Vending	Horticultural Interest	Special Recreational Facility

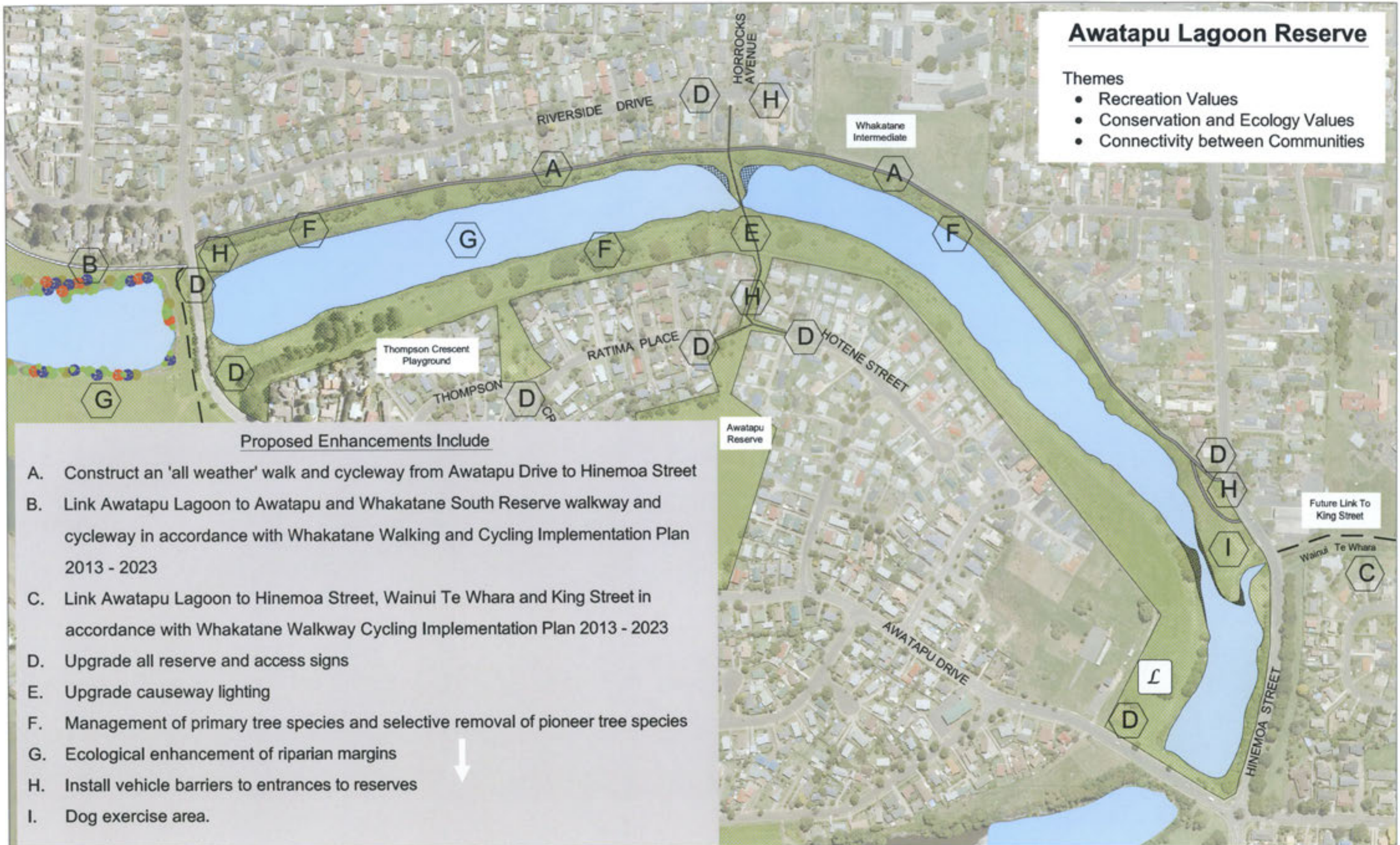
WHAKATANE RIVER GREENWAYS CONCEPT PLAN



Awatapu Lagoon Reserve

Themes

- Recreation Values
- Conservation and Ecology Values
- Connectivity between Communities



Proposed Enhancements Include

- Construct an 'all weather' walk and cycleway from Awatapu Drive to Hinemoa Street
- Link Awatapu Lagoon to Awatapu and Whakatane South Reserve walkway and cycleway in accordance with Whakatane Walking and Cycling Implementation Plan 2013 - 2023
- Link Awatapu Lagoon to Hinemoa Street, Wainui Te Whara and King Street in accordance with Whakatane Walkway Cycling Implementation Plan 2013 - 2023
- Upgrade all reserve and access signs
- Upgrade causeway lighting
- Management of primary tree species and selective removal of pioneer tree species
- Ecological enhancement of riparian margins
- Install vehicle barriers to entrances to reserves
- Dog exercise area.



KEY:

Major Access Point	Public Boat Launching	Ecological/Wildlife Interest	Play Facilities
Car Parking	Visitor Information	Historical Interest	Landmark Feature
Picnic Facilities	Vending	Horticultural Interest	Special Recreational Facility

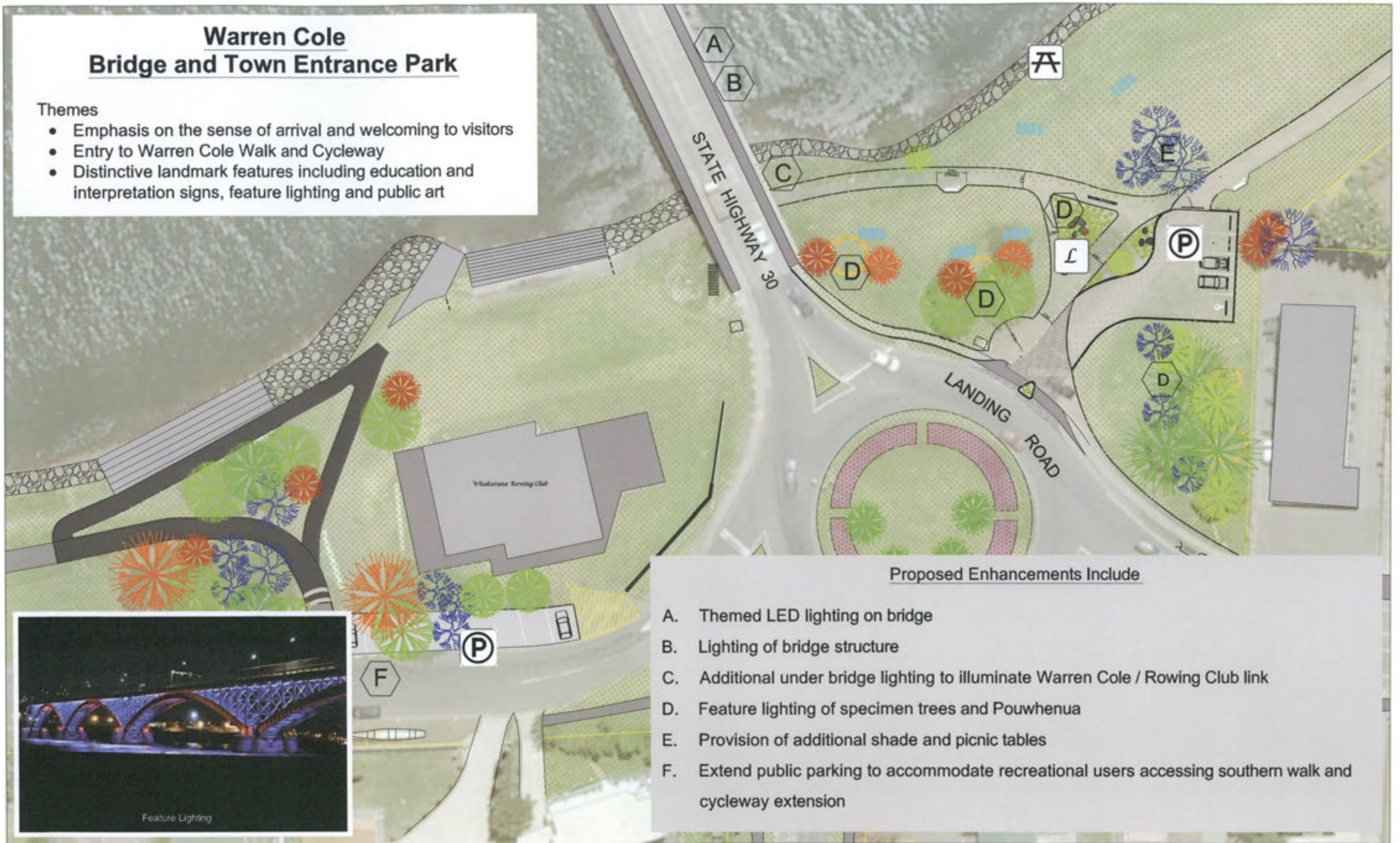
WHAKATANE RIVER GREENWAYS CONCEPT PLAN



Warren Cole Bridge and Town Entrance Park

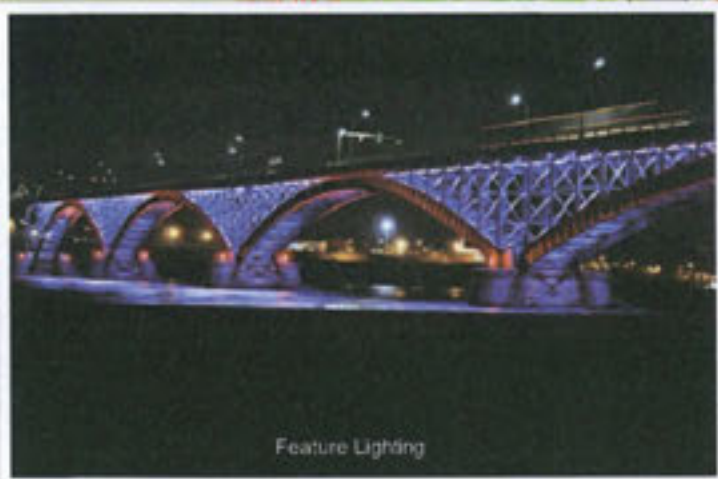
Themes

- Emphasis on the sense of arrival and welcoming to visitors
- Entry to Warren Cole Walk and Cycleway
- Distinctive landmark features including education and interpretation signs, feature lighting and public art



Proposed Enhancements Include

- A. Themed LED lighting on bridge
- B. Lighting of bridge structure
- C. Additional under bridge lighting to illuminate Warren Cole / Rowing Club link
- D. Feature lighting of specimen trees and Pouwhenua
- E. Provision of additional shade and picnic tables
- F. Extend public parking to accommodate recreational users accessing southern walk and cycleway extension



Feature Lighting

KEY:

	Major Access Point		Public Boat Launching		Ecological/Wildlife Interest		Play Facilities
	Car Parking		Visitor Information		Historical Interest		Landmark Feature
	Picnic Facilities		Vending		Horticultural Interest		Special Recreational Facility

WHAKATANE RIVER GREENWAYS CONCEPT PLAN