



OUR PLACE

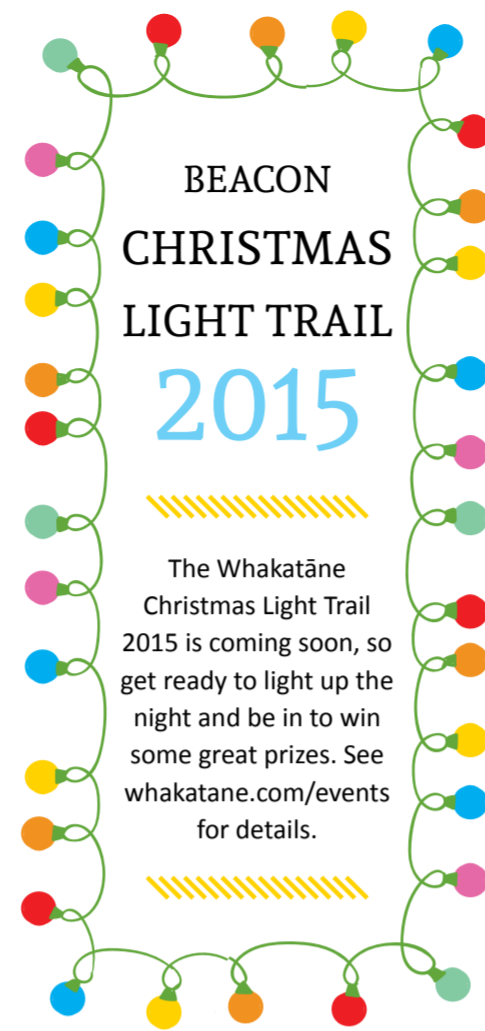
Ko Konei

Your Whakatāne District Council
Community Update - November 2015

Wainui Te Whara channel improvements scheduled

Detailed design works and the development of construction contracts for improvements to the Wainui Te Whara channel are now nearing completion, and it is hoped that work can begin early in 2016.

The works will address flooding issues around the stream and will include the replacement of the Douglas Street and King Street culverts, the installation of 140 metres of sheet piling, and the replacement of five privately owned bridges with new and longer single span bridges. Deepening and reshaping will also be undertaken along most of the stream's urban channel. The Council will undertake a targeted consultation with affected parties in November in preparation for the required resource consent processes.



BEACON CHRISTMAS LIGHT TRAIL 2015

The Whakatāne Christmas Light Trail 2015 is coming soon, so get ready to light up the night and be in to win some great prizes. See whakatane.com/events for details.

EXHIBITIONS

What's on at Te Kōputu?



TIKI - DAVID MARVEN & HARLEM SHINE

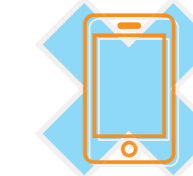
WHAKATĀNE COMMUNITY BOARD GALLERY
OCTOBER 23 - NOVEMBER 22

Tiki is a collaborative exhibition showcasing the talents of two local artists, David Marven and Harlem Shine, as they explore the tiki within a broader continuum of narrative and form.

CONVERSATION ABOUT CONSERVATION - SUSANNE BOONEN

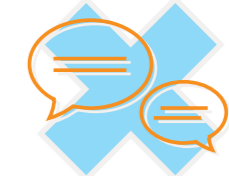
SHEAFF FAMILY GALLERY
OCTOBER 23 - NOVEMBER 22

Through paint and object, we take a journey through our native flora and fauna, where we are challenged to contemplate the future of our environment. Susanne Boonen invites us to reflect on the limited time that some of our unique and vulnerable native and endemic flora and fauna have left.



Mobile Phones

If you get a call while driving, let it go through to voicemail.



Talking to passengers

Keep conversation to a minimum - your eyes and mind should be on the road.



GPS/Maps

Programme/plan your route before you leave. Pull over if you need to check.

Take Action AGAINST DISTRACTION



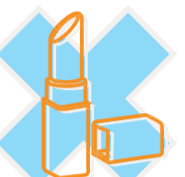
Eating and drinking

Eat and drink before you drive.



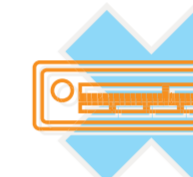
Smoking

Pull over and take a break if you need to smoke.



Make-up or shaving

It's best to groom before getting into your car.



Entertainment systems

Set radio or create a playlist before you go.



Reaching for objects

Make sure objects are secure in your car.

Are you guilty?

*Buckle Up.
Stay Focussed.
Stay Alive.*



www.facebook.com/RoadSafety.EBOP

New weather station for Ōhope



Ōhope Beach now has its own dedicated weather station.

The station has been installed at the Ōhope Golf Club and was jointly funded by the Bay of Plenty Regional Council, Whakatāne District Council and the Ōhope Beach Community Board.



The weather station provides real-time monitoring of rainfall, wind speed and direction, relative humidity, and temperature and barometric pressure. The data can be viewed through the Regional Council's live monitoring website and will also be available on the MetService website soon.

The data will be of benefit to recreational users, commercial operators, and both Councils for flood management and stormwater design purposes.

WAIRAKA CENTENNIAL PARK DEVELOPMENT

Wairaka Centennial Park, officially opened in 1940 as the Whakatāne District's celebration of the 100th anniversary of the signing of the Treaty of Waitangi, is to be expanded and upgraded with a range of additional attractions.

The popular park has long been a favourite with families in the area and has now been incorporated into the Whakatāne River Greenways Concept Plan, which aims to link existing features like the Warren Cole Walkway with parks and other community spaces.

Plans for the park have met with a warm response from Wairaka residents and include a landscaped picnic area, new shade shelters and barbecues, terraced steps into a confined swimming area in the river, a new tidal pool for younger swimmers, and realigned car parking and vehicle access. It is envisaged that development will occur in stages with community organisations funding or undertaking some of the projects involved, and any organisations interested in partnering in this development are invited to contact Council directly.



CREATIVE COMMUNITIES APPLICATIONS SOUGHT

Applications for Creative Communities Whakatāne Scheme funding are now open. The scheme is funded by Creative New Zealand and aims to increase participation in the arts at a local level, as well as lifting the range and diversity of arts available within communities. Applications can be made under three categories – Participation, Diversity, and Young People. If you or your group would like further information, see the Council website (www.whakatane.govt.nz), or contact Janie Storey, Administration Officer Community, on 07 306 0530. **Applications for this funding round close at 5pm on Friday, 27 November.**



Healthy Homes programme for Murupara

A programme to promote healthy homes in the Murupara area is now seeking funding and aims to commence operations in 2016.

Lorreen Hartley, Community Development Advisor at the Whakatāne District Council, says the local community has been working on such a project for several years, and a steering committee has been formed to lead its development.

"Poor housing conditions are a major contributor to respiratory and skin infections in children, and this programme not only seeks to deliver warmer, drier homes through better insulation, but to encourage people to improve other aspects of their homes."

There are 549 occupied dwellings in Murupara, and the steering committee hopes to begin by appointing a project coordinator to identify 50 homes that qualify for inclusion in the programme.

The Ngāti Manawa Charitable Trust, Whakatāne District Council and Bay of Plenty District Health Board have indicated that they will provide financial contributions, or help in overseeing the programme; the Eastern Bay Energy Trust has agreed to contribute \$50,000 to the project, and additional funding will be sought to support the initiative. "It is envisaged there will also be six DIY skills programmes for residents, as well as neighbourhood development projects," Ms Hartley says.



WAIRAKA CENTENNIAL PARK | ARTIST IMPRESSION

Facebook presence for Ōhope Beach

A Facebook page for Ōhope Beach was launched at the beginning of October and is proving popular with residents and people from outside the area.

The page came about thanks to the support of the Ōhope Beach Community Board and aims to grow the visibility of the Ōhope area as a holiday destination and encourage people to move or bring their business to the area.

