



OUR PLACE

Ko Konei

Your Whakatāne District Council
Community Update - February 2017

ROAD SAFETY – NEW CAMPAIGN OFFERS TIPS FOR THE PERFECT SUMMER ROAD TRIP

Eastern Bay roads are busier than ever over summer, and a new campaign aims to raise awareness of some common issues.

The 'Slow Down and Enjoy the Ride' campaign is a local initiative which aims to highlight the importance of staying focused, sober, secure and keeping to a safe speed while driving.

The campaign was launched with 10,000 Road Trip Guides being distributed across the Eastern Bay. The guides contain safety advice and tips for planning the perfect road trip, as well as deals and discount coupons to use at local businesses and attractions. In addition, the Eastern Bay Road Safety Programme Facebook page will be running an online summer photography competition to support the campaign, and will also be giving away 50 'Enjoy the Ride' Road Trip Packs over the next couple of months.

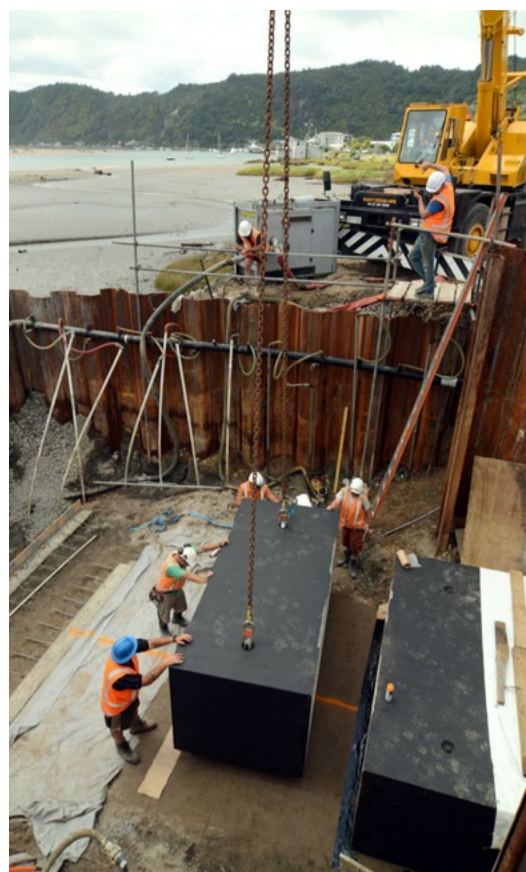
The 'Enjoy the Ride' Road guides can be found in cafes, restaurants, petrol stations and retailers across the Eastern Bay. To find out more, visit www.facebook.com/RoadSafety.EBOP

ENJOY
the
RIDE

McAlister stormwater upgrade milestone

A major upgrade to the McAlister stormwater pump station has reached its first milestone, with the installation of the last four sections of a box culvert which will allow stormwater from the Apanui catchment to gravity drain through the Whakatāne River stopbank.

Thirteen three-metre-wide concrete culvert sections, each weighing seven tonnes, have been installed through the stopbank to convey stormwater to the river when the tide or river flow conditions are favourable.



Once the outlet structure is completed on the river side, the adjacent stop bank will be reconstructed. Work will then move on to the second stage of the upgrade, which includes modifications to the existing pump station structure and the installation of three new semi-submersible pumps. Each pump will be able to discharge almost 2000 litres per second, a 60 percent increase in capacity over the existing pumps. The inlet to the pump station from the canal will also be widened from 7 metres to 12 metres, to accommodate the additional flow.

Whakatāne District Council Infrastructure General Manager Tomasz Krawczyk says the upgrade will offer a much greater degree of protection during extreme weather events. "This has been a major undertaking, working in a difficult environment," he says. "When it is completed, the upgrade will significantly improve stormwater drainage from low-lying, northern areas of Whakatāne and greatly reduce surface flooding impacts on properties and the roading network."

New water supply for Edgecumbe and Te Teko

Whakatāne District Council is developing a new water source to supply the Edgecumbe and Te Teko communities. These townships have traditionally been supplied from the Braemar Springs, Johnson Road and Waikohua Puna Wai (Tahuna Road) water sources, which do not meet the recommended arsenic and antimony levels in the national drinking water standards, or in the case of the Tahuna Road source, because the bore is not secure. Once completed, this project will see Edgecumbe, Te Teko, and some neighbouring areas supplied only with water from the Otumahi (Paul Road) and Tahuna Road sources, which comply with the drinking water standards.

The \$5 million-plus project involves the construction of a water treatment



plant at Paul Road to chlorinate and adjust the pH of water drawn from the Otumahi source, plus the installation of the pumping and reticulation network required to link with the existing Edgecumbe and Te Teko networks. The existing treatment plant at Tahuna Road will also be upgraded to include UV treatment.

Work on the new scheme is expected to be completed by the end of June.

YOUR VOTE YOUR COMMUNITY TĀNEATUA BY-ELECTION

Voting commenced for the Tāneatua Community Board by-election on 26 January 2017. Two candidates – Hohepa McLean and Korotau Meihana-Tait – are standing for one vacant position. Voting papers have been delivered to all electors on the Waimana-Tāneatua ward roll and must be returned by noon on Friday, 17 February.

Anyone aged 18 or older who lives in the Ward, but has not received their voting papers, will need to cast a special vote. To do this, you will need to either visit the Council office, or call 07 306 0500 to receive special voting papers.

Whakatane District
creative
COMMUNITIES *nz*

CREATIVE COMMUNITY REPRESENTATIVES WANTED

The Creative Communities Allocation Committee is seeking community representatives who are familiar with a broad range of local arts activities to help allocate funding to District art and cultural projects. If you have an arts background and would like to be considered for this voluntary role, please apply in writing by Friday, 17 February to: The Chief Executive, Whakatane District Council, Private Bag 1002, Whakatāne 3158. Enquiries to Janie Storey: janie.storey@whakatane.govt.nz, or phone 306 0530.

COUNCIL BEGINS PROPERTY FILE DIGITISATION

The Council is undertaking a pilot scheme that will see 1000 property files digitised by May. Once the pilot scheme has been completed, all remaining physical files – nearly 25,000 in total – will also be digitised.

The Council's Customer and Information Services Team Leader, Justin McGeough, says property files will still be accessible to the public throughout the digitisation process, which will ultimately make digitised files available online.

"The digitisation is being undertaken by Desktop Imaging in Wellington, and there will be a full quality assurance programme in place to check that each digital version is consistent with the physical file," he says. "The first batch of 1000 files, together with any subdivision, lease or liquor licensing files related to those properties, has been dispatched, and we will be using this part of the process to identify any issues before the rest of the files go away for processing in June."

Any request for a file which is undergoing digitisation will see the processing of that file prioritised, with the goal of supplying a digital version within one working day. Files can be requested by phone, email (info@whakatane.govt.nz) or via Council's Customer Services department.

It is expected the digitisation process will be completed by the end of 2018.

OXFAM TRAILWALKER

Oxfam Trailwalker is back, so why not make it your New Year's resolution to get fit and take part in this life-changing challenge on 25–26 March? You'll not only be improving your own health and fitness, you'll also be helping to raise money for a great cause.

OXFAM TRAILWALKER
100KM | TEAMS OF 4 | 36HRS
50KM | TEAMS OF 4 | 18HRS

There's still time to get in shape if you're aiming to take on the 50km challenge, and if you already get regular exercise, then why not set your sights on the 100km event? Oxfam Trailwalker has so far raised over \$9 million for projects around the Pacific. This year, Oxfam hopes to top the \$10 million mark, so get some friends together and get behind this great event, which is held right here in Whakatāne. See oxfamtrailwalker.org.nz for details.

BLIND DATE
with a
Book

Pick a genre
and we'll fix you up with a
NEW RELEASE

Plus **A SURPRISE READ!**

ALL FOR THREE WEEKS AND ONLY \$2

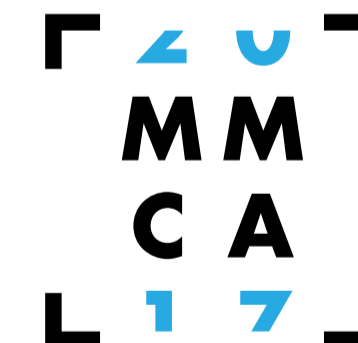
PROMOTION RUNS FROM 13-26 FEBRUARY



WHAKATĀNE HORIZON ENERGY LIBRARY
Te Kōpuru a te Whanga a Toi - Whakatāne Library & Exhibition Centre

molly morpeth canaday award

painting
and
drawing



exhibition opens
28 January
- **12** March
2017

location **te kōpuru a te whanga a toi whakatāne library and exhibition centre esplanade mall kōkōhoroa drive** info www.mollymorpethcanaday.co.nz