

Dog Control Areas

Path: G:\DATA\GIS\ArcGIS\Maps\AnimalControl_Parking\DogControlAreasL.mxd
Date of issue: 29/05/2018

Scale: 1:7,000
Author: <Add initials>

DISCLAIMER: While Whakatane District Council (WDC), has exercised all reasonable skill and care in controlling the contents of this information, WDC gives no warranty in relation to the material, including its accuracy, reliability and suitability and accepts no liability whatsoever in relation to any loss, damage or other costs (whether direct, indirect or consequential) relating to the use of any material, any compilations, derivative works or modifications of the material. Aerial Photography flown between 2001 and 2016, depending on the area. Parcel boundaries are to be taken as approximate only, not to be substituted for site specific survey. May contain LINZ data: Crown Copyright Reserved. Note: Place names may not conform to LINZ guidelines 2008. Position of all assets & historical sites are approximate, actual positions are to be verified on site.

COASTLANDS



DOGS MUST BE ON A LEAD



DOG EXERCISE AREA

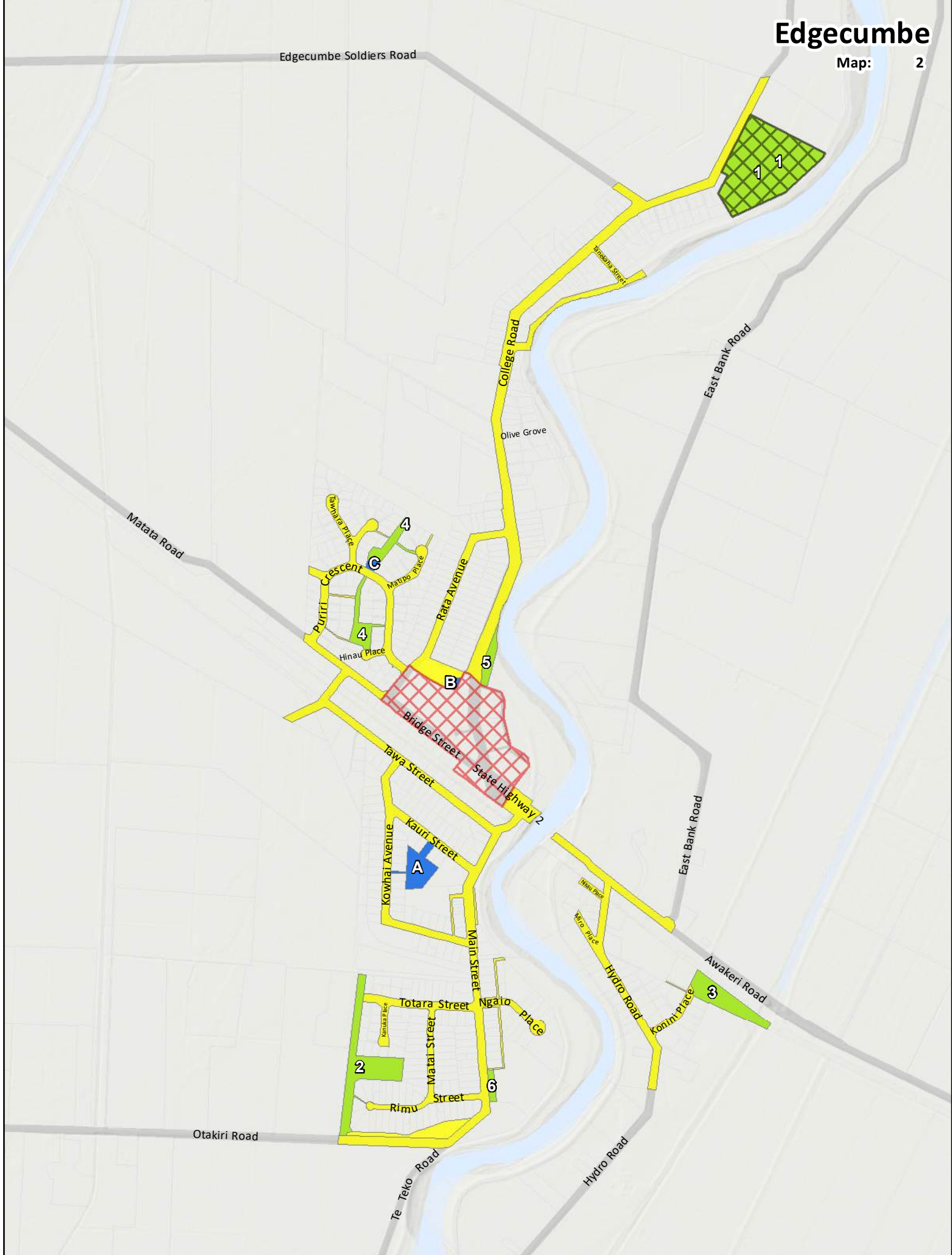
1. Coastlands Beachfront
20. Piripai Beach



DOGS PROHIBITED AT ALL TIMES*

- A. Alpha Ave Playground Reserve
- B. Fishermans Drive Reserve

* Includes all public play areas (defined as areas containing apparatus or equipment for children to play on)



Dog Control Areas

Path: G:\DATA\GIS\ArcGIS\Maps\Animal Control_Parking\DogControlAreasP.mxd

Date of issue: 29/05/2018

Scale: 1:12,000

Author: <Add initials>



DISCLAIMER: While Whakatane District Council (WDC), has exercised all reasonable skill and care in controlling the contents of this information, WDC gives no warranty in relation to the material, including its accuracy, reliability and suitability and accepts no liability whatsoever in relation to any loss, damage or other costs (whether direct, indirect or consequential) relating to the use of any material, any compilations, derivative works or modifications of the material. Aerial Photography flown between 2001 and 2016, depending on the area. Parcel boundaries are to be taken as approximate only, not to be substituted for site specific survey. May contain LINZ data: Crown Copyright Reserved. Note: Place names may not conform to LINZ guidelines 2008. Position of all assets & historical sites are approximate, actual positions are to be verified on site.

EDGE CUMBE



DOGS MUST BE ON A LEAD



DOG EXERCISE AREA

1. Edgecumbe Domain
2. Kanuka Park
3. Konini Place Reserve
4. Puriri Cres Reserve
5. College Rd Reserve
6. Main St Reserve



DOGS PROHIBITED AT ALL TIMES*

- A. Bill Orr Park
- B. Riverslea Playground
- C. Puriri Cres Playground



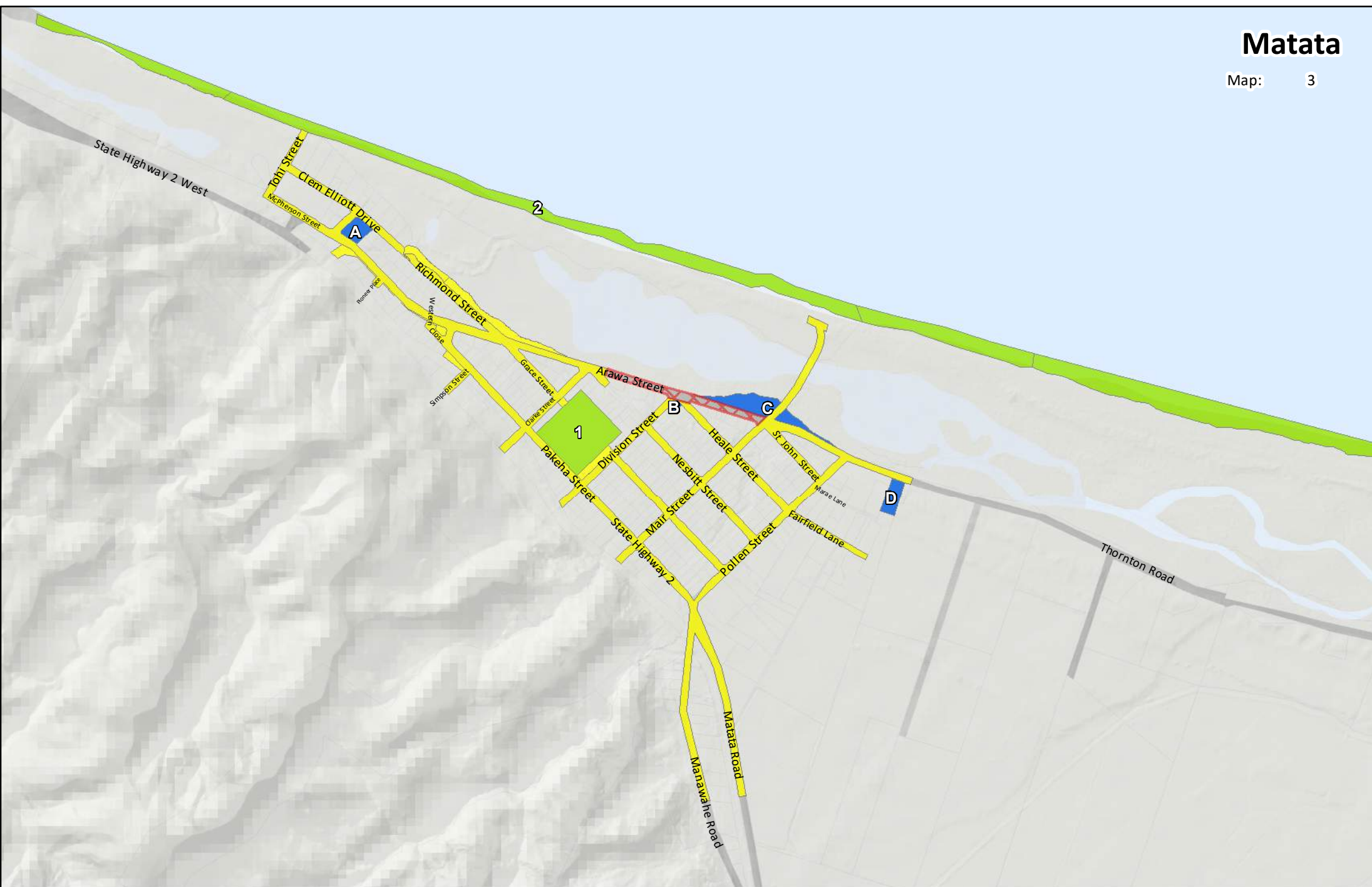
DOGS PROHIBITED on sportsfields when formalised sporting fixtures are taking place or when the described areas are being leased for any approved activity



DOGS PROHIBITED

9am to 5pm, 7 days a week

* Includes all public play areas (defined as areas containing apparatus or equipment for children to play on)



Dog Control Areas

Path: G:\DATA\GIS\ArcGIS\Maps\AnimalControl_Parking\DogControlAreasL.mxd

Date of issue: 29/05/2018

Scale: 1:13,000

Author: <Add initials>



DISCLAIMER: While Whakatane District Council (WDC), has exercised all reasonable skill and care in controlling the contents of this information, WDC gives no warranty in relation to the material, including its accuracy, reliability and suitability and accepts no liability whatsoever in relation to any loss, damage or other costs (whether direct, indirect or consequential) relating to the use of any material, any compilations, derivative works or modifications of the material. Aerial Photography flown between 2001 and 2016, depending on the area. Parcel boundaries are to be taken as approximate only, not to be substituted for site specific survey. May contain LINZ data: Crown Copyright Reserved. Note: Place names may not conform to LINZ guidelines 2008. Position of all assets & historical sites are approximate, actual positions are to be verified on site.



WHAKATANE
DISTRICT COUNCIL
www.whakatane.govt.nz

MATATA



DOGS MUST BE ON A LEAD



DOG EXERCISE AREA

1. Richmond Park
2. Matata Beachfront



DOGS PROHIBITED AT ALL TIMES*

- A. Kaokaoroa Scenic Reserve
- B. Playground Reserve
- C. Matata Recreation Reserve
- D. Rangitihi Cemetery

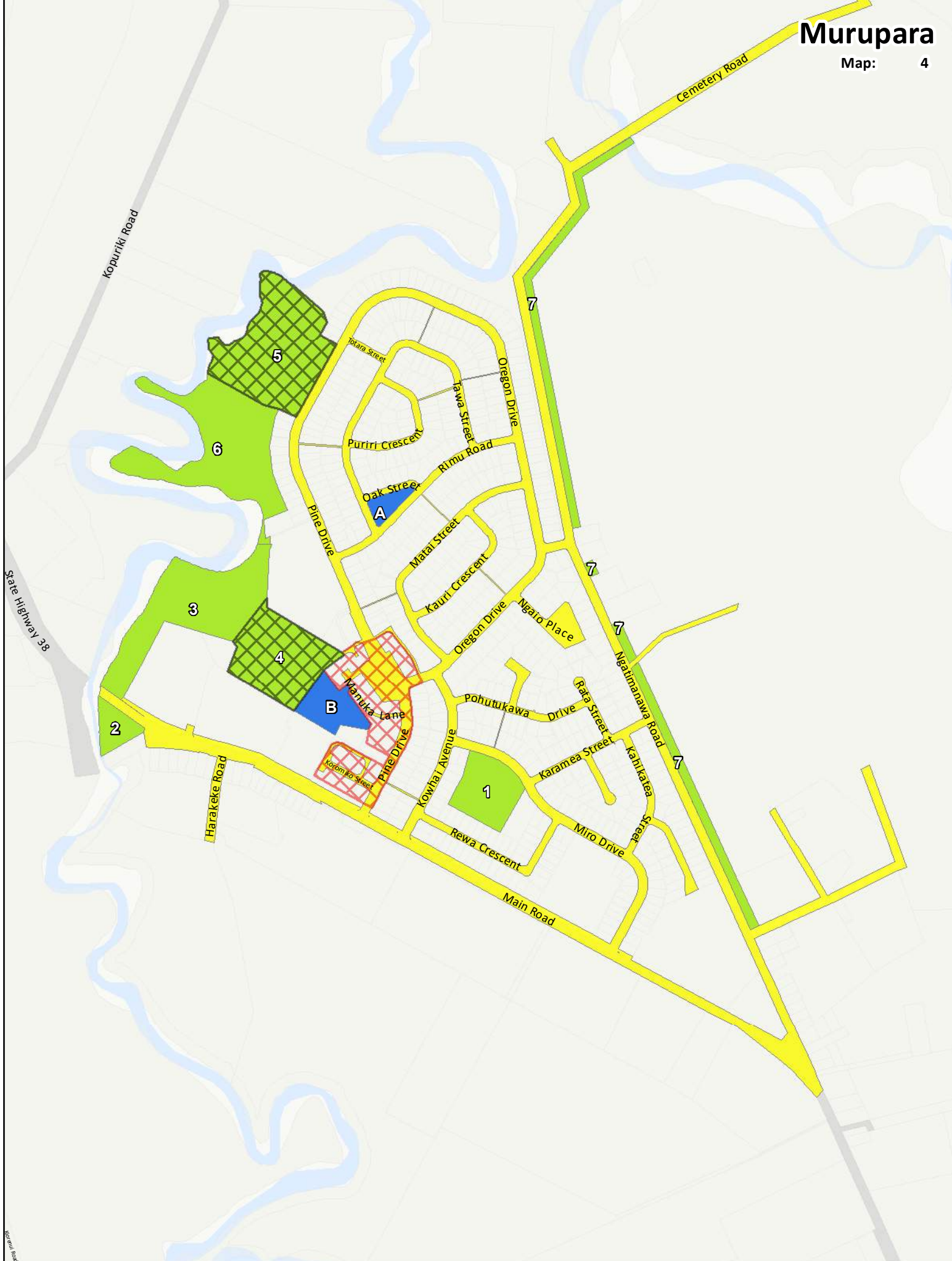


DOGS PROHIBITED on sportsfields when formalised sporting fixtures are taking place or when the described areas are being leased for any approved activity



DOGS PROHIBITED 9am to 5pm, 7 days a week

* Includes all public play areas (defined as areas containing apparatus or equipment for children to play on)



Dog Control Areas

Path: G:\DATA\GIS\ArcGIS\Maps\Animal Control_Parking\DogControlAreasP.mxd

Date of issue: 29/05/2018

Scale: 1:10,000

Author: <Add initials>



DISCLAIMER: While Whakatane District Council (WDC), has exercised all reasonable skill and care in controlling the contents of this information, WDC gives no warranty in relation to the material, including its accuracy, reliability and suitability and accepts no liability whatsoever in relation to any loss, damage or other costs (whether direct, indirect or consequential) relating to the use of any material, any compilations, derivative works or modifications of the material. Aerial Photography flown between 2001 and 2016, depending on the area. Parcel boundaries are to be taken as approximate only, not to be substituted for site specific survey. May contain LINZ data: Crown Copyright Reserved. Note: Place names may not conform to LINZ guidelines 2008. Position of all assets & historical sites are approximate, actual positions are to be verified on site.

MURUPARA

 DOGS MUST BE ON A LEAD

 DOG EXERCISE AREA

1. Miro Drive Reserve
2. Taniwha Park / Roy Hardy Reserve
3. River Edge Reserve
4. Wingate Park
5. Evans Park
6. Fire Station Reserve
7. Ngatimanawa Road Reserve

 DOGS PROHIBITED AT ALL TIMES*

- A. Rimu Rd Reserve
- B. Service Centre Reserve

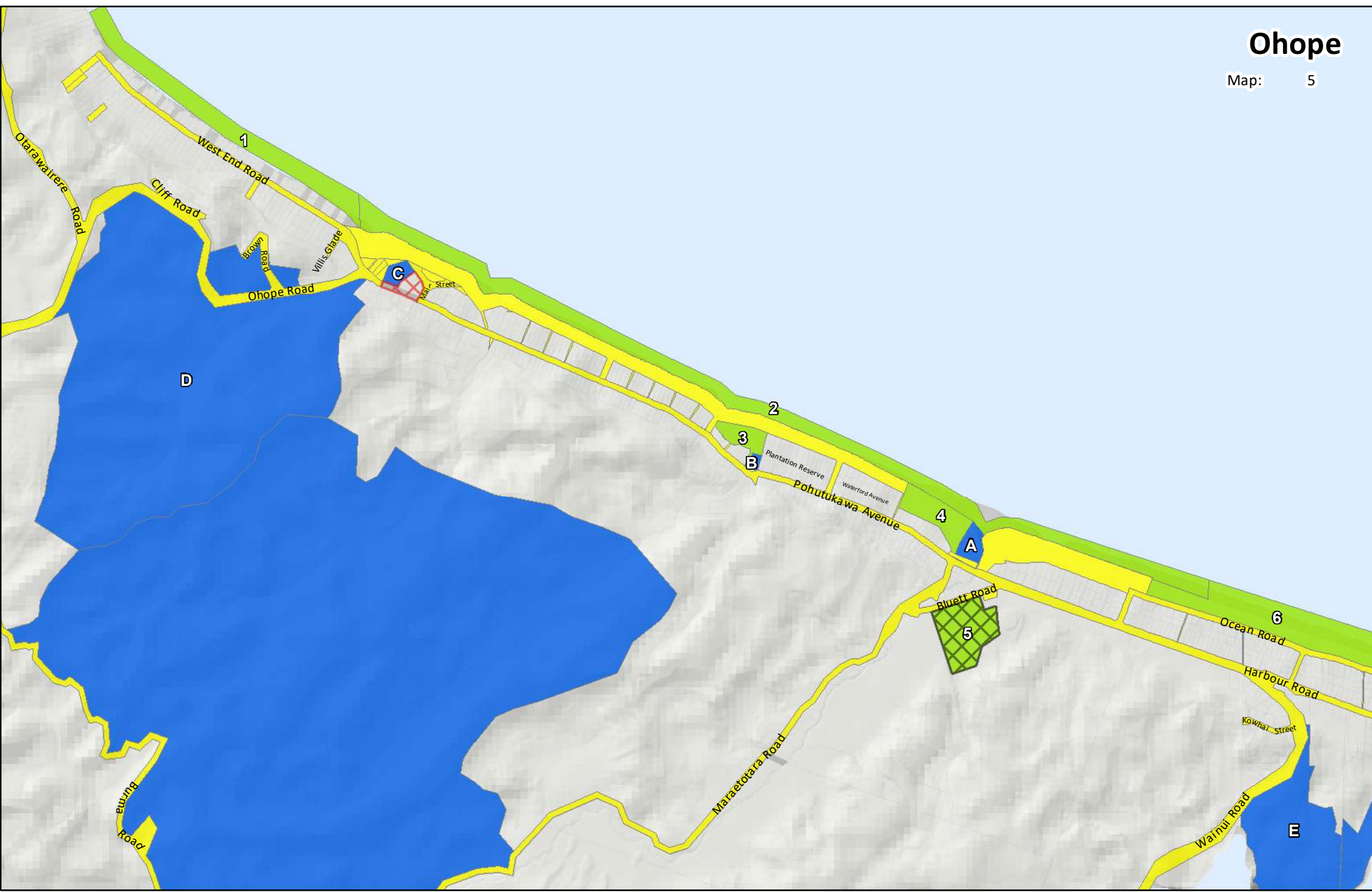


DOGS PROHIBITED on sportsfields when formalised sporting fixtures are taking place or when the described areas are being leased for any approved activity



DOGS PROHIBITED
9am to 5pm, 7 days a week

* Includes all public play areas (defined as areas containing apparatus or equipment for children to play on)



Dog Control Areas

Path: G:\DATA\GIS\ArcGIS\Maps\AnimalControl_Parking\DogControlAreasL.mxd

Date of issue: 29/05/2018

Scale: 1:16,000

Author: <Add initials>



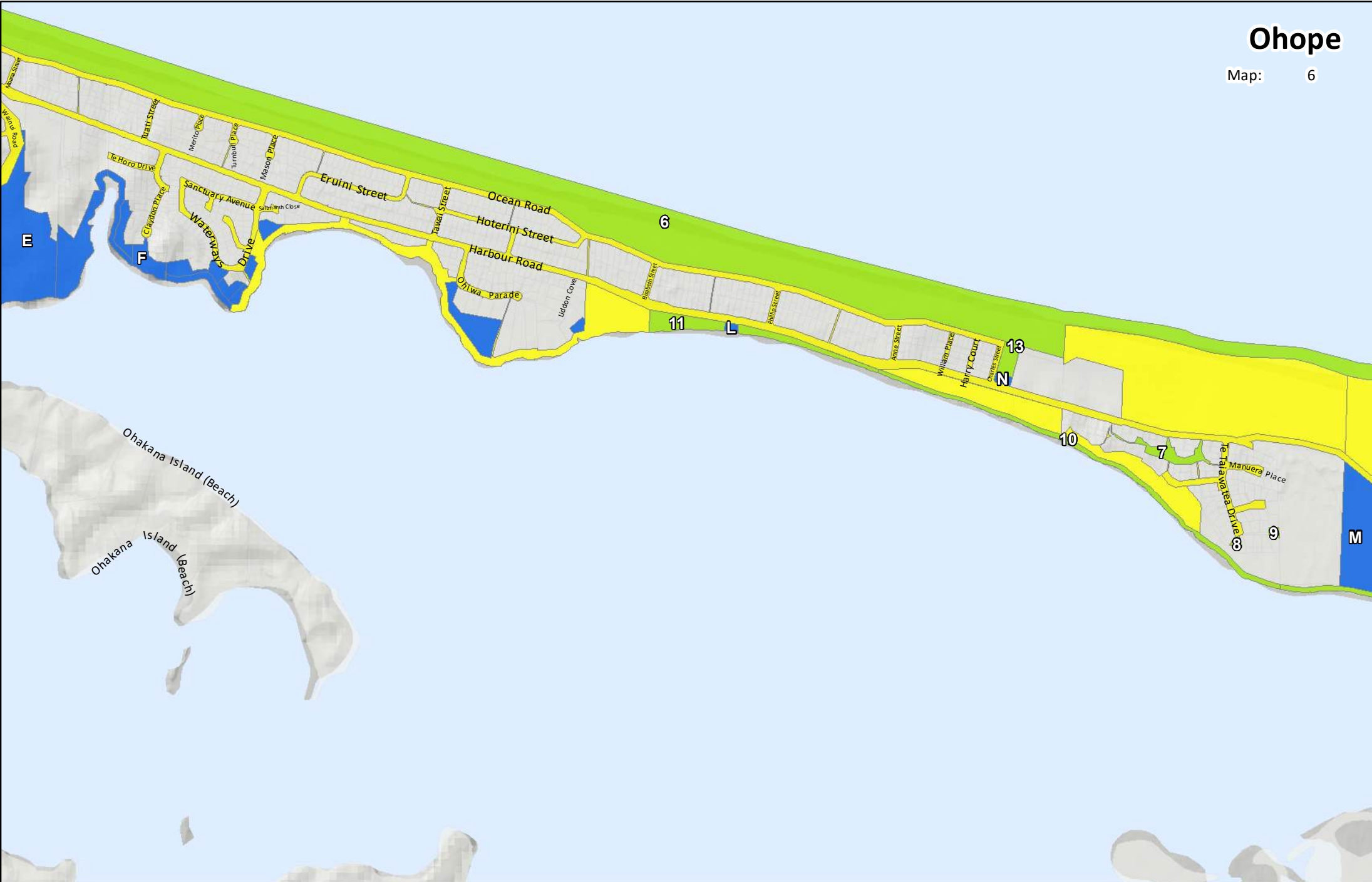
DISCLAIMER: While Whakatane District Council (WDC), has exercised all reasonable skill and care in controlling the contents of this information, WDC gives no warranty in relation to the material, including its accuracy, reliability and suitability and accepts no liability whatsoever in relation to any loss, damage or other costs (whether direct, indirect or consequential) relating to the use of any material, any compilations, derivative works or modifications of the material. Aerial Photography flown between 2001 and 2016, depending on the area. Parcel boundaries are to be taken as approximate only, not to be substituted for site specific survey. May contain LINZ data: Crown Copyright Reserved. Note: Place names may not conform to LINZ guidelines 2008. Position of all assets & historical sites are approximate, actual positions are to be verified on site.



WHAKATANE
DISTRICT COUNCIL
www.whakatane.govt.nz

Ohope

Map: 6



Dog Control Areas

Path: G:\DATA\GIS\ArcGIS\Maps\AnimalControl_Parking\DogControlAreasL.mxd
Date of issue: 29/05/2018

Scale: 1:16,000

Author: <Add initials>



DISCLAIMER: While Whakatane District Council (WDC), has exercised all reasonable skill and care in controlling the contents of this information, WDC gives no warranty in relation to the material, including its accuracy, reliability and suitability and accepts no liability whatsoever in relation to any loss, damage or other costs (whether direct, indirect or consequential) relating to the use of any material, any compilations, derivative works or modifications of the material. Aerial Photography flown between 2001 and 2016, depending on the area. Parcel boundaries are to be taken as approximate only, not to be substituted for site specific survey. May contain LINZ data: Crown Copyright Reserved. Note: Place names may not conform to LINZ guidelines 2008. Position of all assets & historical sites are approximate, actual positions are to be verified on site.



Dog Control Areas

Path: G:\DATA\GIS\ArcGIS\Maps\AnimalControl_Parking\DogControlAreasL.mxd
Date of issue: 11/10/2018

Scale: 1:16,000
Author: <Add initials>

DISCLAIMER: While Whakatane District Council (WDC), has exercised all reasonable skill and care in controlling the contents of this information, WDC gives no warranty in relation to the material, including its accuracy, reliability and suitability and accepts no liability whatsoever in relation to any loss, damage or other costs (whether direct, indirect or consequential) relating to the use of any material, any compilations, derivative works or modifications of the material. Aerial Photography flown between 2001 and 2016, depending on the area. Parcel boundaries are to be taken as approximate only, not to be substituted for site specific survey. May contain LINZ data: Crown Copyright Reserved. Note: Place names may not conform to LINZ guidelines 2008. Position of all assets & historical sites are approximate, actual positions are to be verified on site.

OHOPE



DOGS MUST BE ON A LEAD



DOG EXERCISE AREA

1. West End Beachfront
2. Pohutukawa Ave Beachfront
3. Wharekura Reserve
4. Maraetotara Reserve
5. Bluett Park
6. Ocean Road Beachfront
7. Waiotahi / Waimana Reserve
8. Local Purpose Reserve
9. Local Purpose Reserve
10. Esplanade Reserve
11. Otao South Reserve
12. Ohope Spit Reserve
13. Bob Byrne Park



DOGS PROHIBITED AT ALL TIMES

- A. Maraetotara Playground
- B. Wharekura Reserve Tennis Courts
- C. Mahy Reserve Playground
- D. Ohope Scenic Reserve
- E. Tauwhare Pa Scenic Reserve
- F. Pacific Park
- G. Burma Road
- K. Ohope Wildlife Reserve (DOC land)
- L. Otao South Playground
- M. Port Ohope Recreation Reserve
- N. Bob Byrne Park Playground



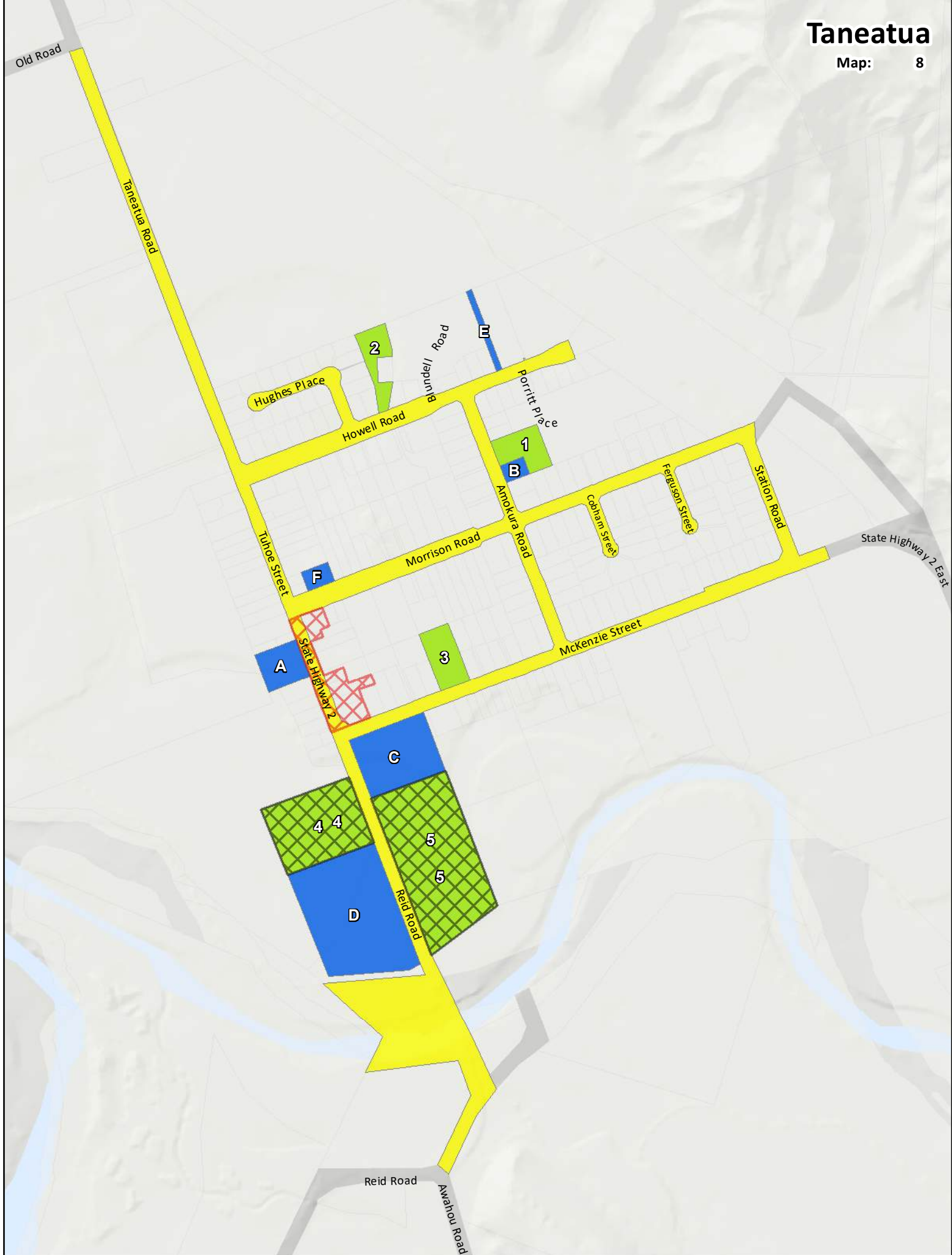
DOGS PROHIBITED on sportsfields when formalised sporting fixtures are taking place or when the described areas are being leased for any approved activity



DOGS PROHIBITED

9am to 5pm, 7 days a week

* Includes all public play areas (defined as areas containing apparatus or equipment for children to play on)



Dog Control Areas

Path: G:\DATA\GIS\ArcGIS\Maps\AnimalControl_Parking\DogControlAreasP.mxd

Date of issue: 29/05/2018

Scale: 1:7,000

Author: <Add initials>



DISCLAIMER: While Whakatane District Council (WDC), has exercised all reasonable skill and care in controlling the contents of this information, WDC gives no warranty in relation to the material, including its accuracy, reliability and suitability and accepts no liability whatsoever in relation to any loss, damage or other costs (whether direct, indirect or consequential) relating to the use of any material, any compilations, derivative works or modifications of the material. Aerial Photography flown between 2001 and 2016, depending on the area. Parcel boundaries are to be taken as approximate only, not to be substituted for site specific survey. May contain LINZ data: Crown Copyright Reserved. Note: Place names may not conform to LINZ guidelines 2008. Position of all assets & historical sites are approximate, actual positions are to be verified on site.

TANEATUA



DOGS MUST BE ON A LEAD



DOG EXERCISE AREA

1. Amokura Rd Reserve
2. Howell Rd Reserve
3. McKenzie St Reserve
4. Mitchell Park Reserve
5. Taneatua Domain Field



DOGS PROHIBITED AT ALL TIMES*

- A. Jack Knowles Reserve
- B. Amokura Rd Reserve
- C. Taneatua Domain
- D. Mitchell Park (Pony Club)
- E. Howell Rd Plantation
- F. Morrison Rd Reserve

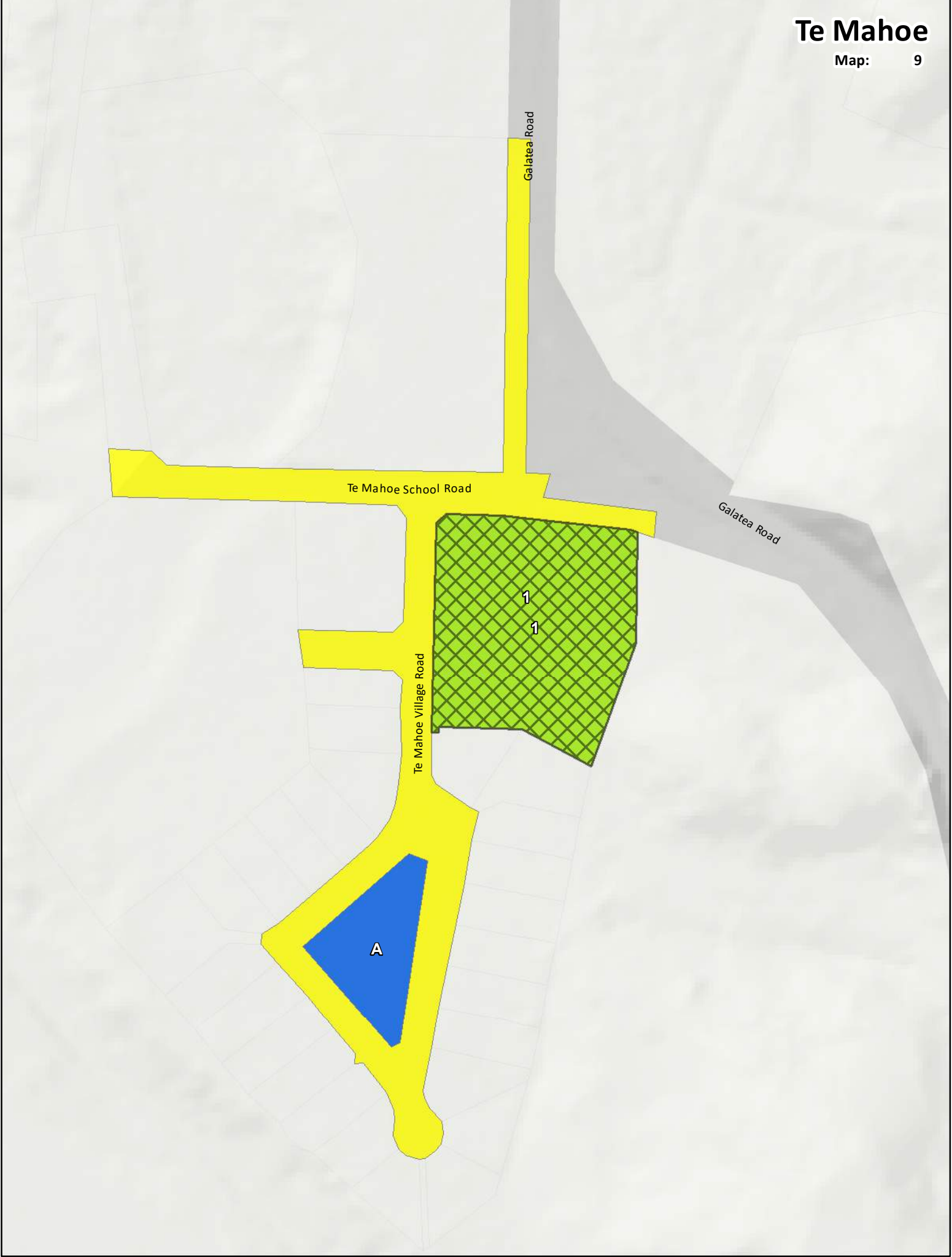


DOGS PROHIBITED on sportsfields when formalised sporting fixtures are taking place or when the described areas are being leased for any approved activity



DOGS PROHIBITED
9am to 5pm, 7 days a week

* Includes all public play areas (defined as areas containing apparatus or equipment for children to play on)



TE MAHOE



DOGS MUST BE ON A LEAD



DOG EXERCISE AREA

1. Te Mahoe Tennis Courts



DOGS PROHIBITED AT ALL TIMES*

A. Te Mahoe Playground



DOGS PROHIBITED on sportsfields when formalised sporting fixtures are taking place or when the described areas are being leased for any approved activity



DOGS PROHIBITED

9am to 5pm, 7 days a week

* Includes all public play areas (defined as areas containing apparatus or equipment for children to play on)



Dog Control Areas

Path: G:\DATA\GIS\ArcGIS\Maps\AnimalControl_Parking\DogControlAreasL.mxd

Date of issue: 29/05/2018



DISCLAIMER: While Whakatane District Council (WDC), has exercised all reasonable skill and care in controlling the contents of this information, WDC gives no warranty in relation to the material, including its accuracy, reliability and suitability and accepts no liability whatsoever in relation to any loss, damage or other costs (whether direct, indirect or consequential) relating to the use of any material, any compilations, derivative works or modifications of the material. Aerial Photography flown between 2001 and 2016, depending on the area. Parcel boundaries are to be taken as approximate only, not to be substituted for site specific survey. May contain LINZ data: Crown Copyright Reserved. Note: Place names may not conform to LINZ guidelines 2008. Position of all assets & historical sites are approximate, actual positions are to be verified on site.

Scale: 1:6,000

Author: <Add initials>

TE TEKO



DOGS MUST BE ON A LEAD



DOG EXERCISE AREA

1. Eivers Park
2. Dunderdale Park



DOGS PROHIBITED AT ALL TIMES*

- A. Tui Street Playground
- B. Eivers Park Playground



DOGS PROHIBITED on sportsfields when formalised sporting fixtures are taking place or when the described areas are being leased for any approved activity



DOGS PROHIBITED
9am to 5pm, 7 days a week

* Includes all public play areas (defined as areas containing apparatus or equipment for children to play on)



Dog Control Areas

Path: G:\DATA\GIS\ArcGIS\Maps\AnimalControl_Parking\DogControlAreasL.mxd

Date of issue: 29/05/2018



DISCLAIMER: While Whakatane District Council (WDC), has exercised all reasonable skill and care in controlling the contents of this information, WDC gives no warranty in relation to the material, including its accuracy, reliability and suitability and accepts no liability whatsoever in relation to any loss, damage or other costs (whether direct, indirect or consequential) relating to the use of any material, any compilations, derivative works or modifications of the material. Aerial Photography flown between 2001 and 2016, depending on the area. Parcel boundaries are to be taken as approximate only, not to be substituted for site specific survey. May contain LINZ data: Crown Copyright Reserved. Note: Place names may not conform to LINZ guidelines 2008. Position of all assets & historical sites are approximate, actual positions are to be verified on site.

Scale: 1:4,000

Author: <Add initials>

WAIMANA



DOGS MUST BE ON A LEAD



DOG EXERCISE AREA

1. Waimana Domain



DOGS PROHIBITED AT ALL TIMES*

A. Waimana War Memorial Hall



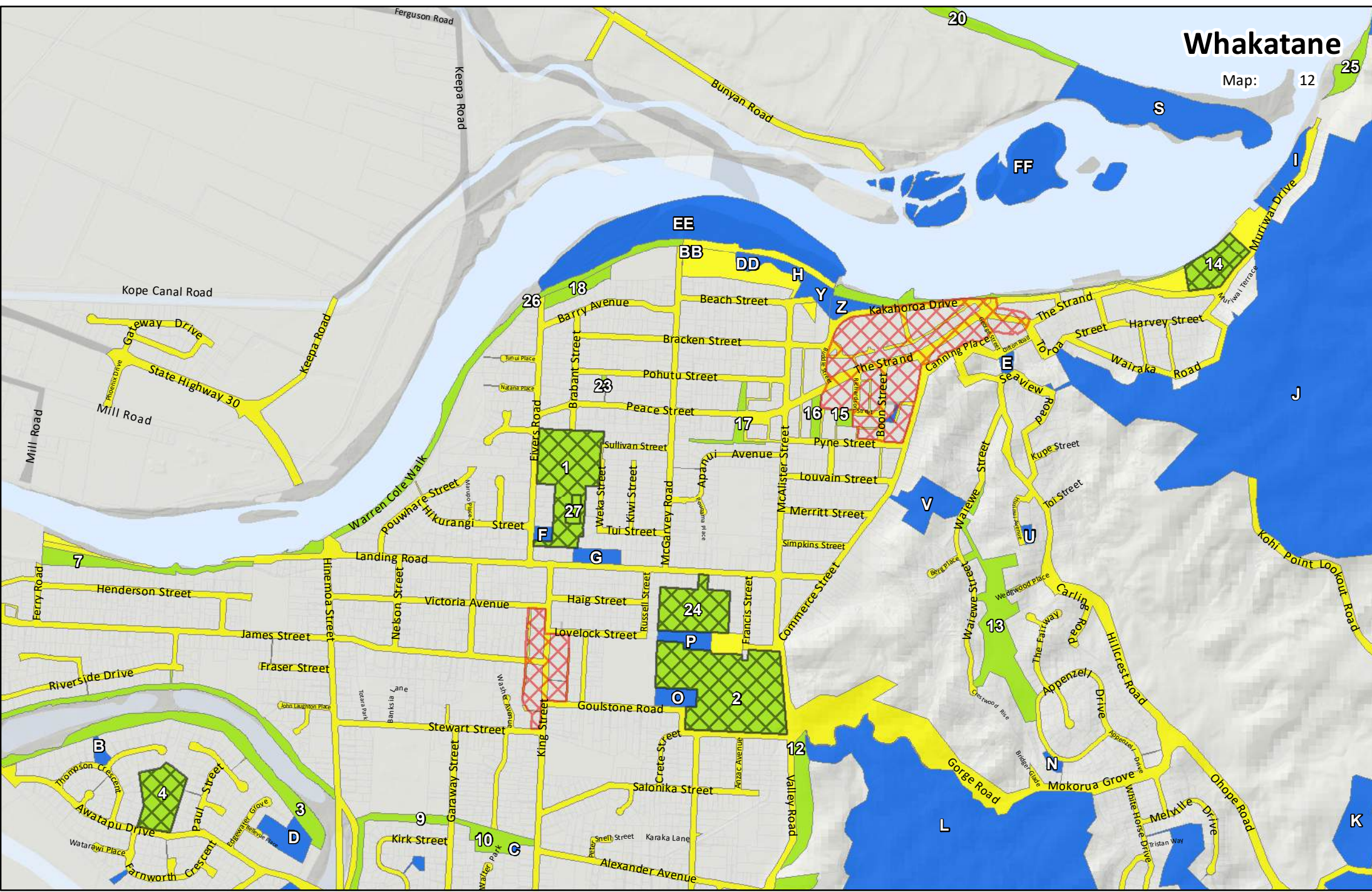
DOGS PROHIBITED on sportsfields when formalised sporting fixtures are taking place or when the described areas are being leased for any approved activity



DOGS PROHIBITED

9am to 5pm, 7 days a week

* Includes all public play areas (defined as areas containing apparatus or equipment for children to play on)



Dog Control Areas



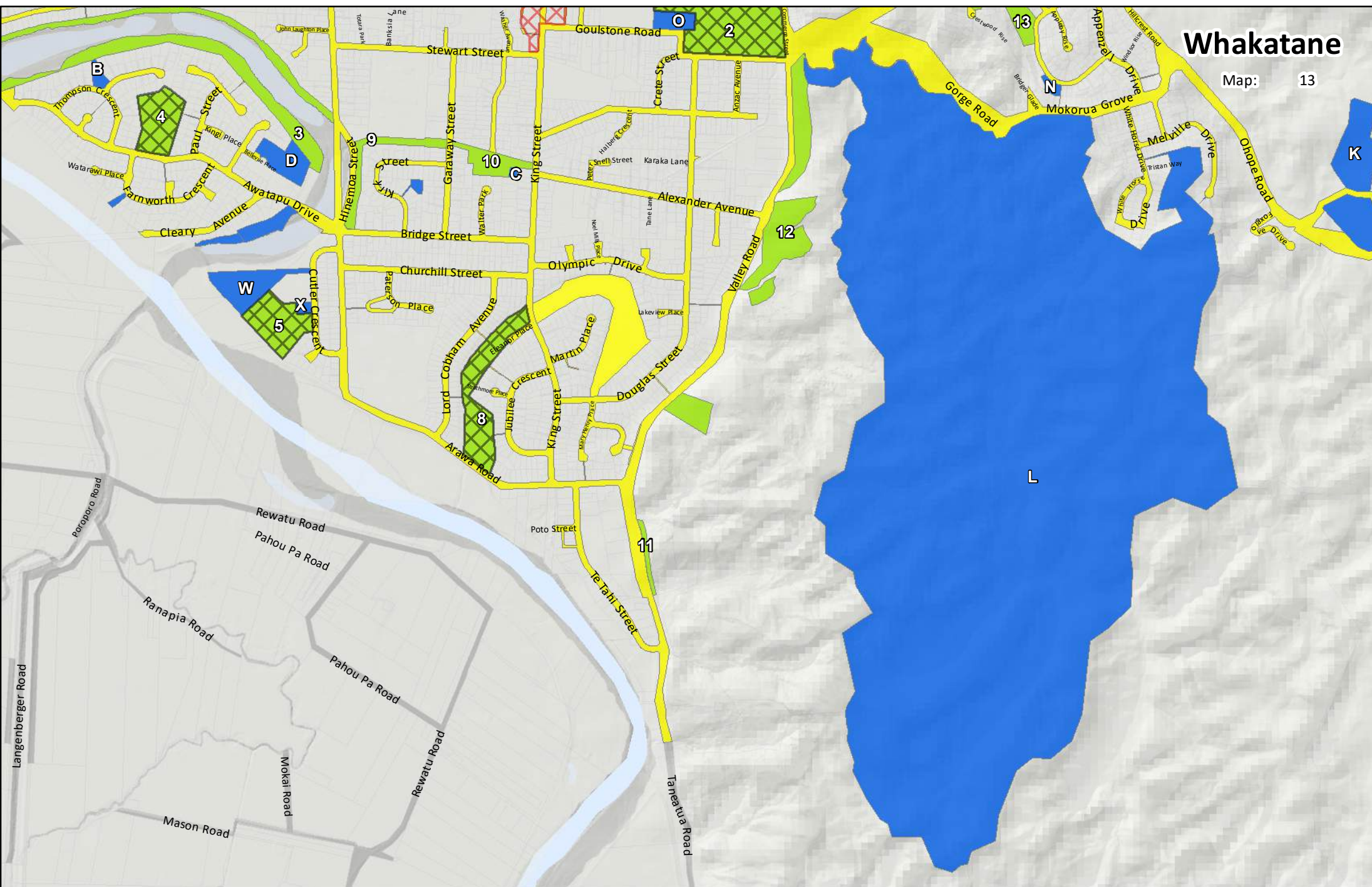
Path: G:\DATA\GIS\ArcGIS\Maps\AnimalControl_Parking\DogControlArea.mxd
Date of issue: 29/05/2018

Scale: 1:16,000

Author: <Add initials>



DISCLAIMER: While Whakatane District Council (WDC), has exercised all reasonable skill and care in controlling the contents of this information, WDC gives no warranty in relation to the material, including its accuracy, reliability and suitability and accepts no liability whatsoever in relation to any loss, damage or other costs (whether direct, indirect or consequential) relating to the use of any material, any compilations, derivative works or modifications of the material. Aerial Photography flown between 2001 and 2016, depending on the area. Parcel boundaries are to be taken as approximate only, not to be substituted for site specific survey. May contain LINZ data: Crown Copyright Reserved. Note: Place names may not conform to LINZ guidelines 2008. Position of all assets & historical sites are approximate, actual positions are to be verified on site.



Dog Control Areas

Path: G:\DATA\GIS\ArcGIS\Maps\AnimalControl_Parking\DogControlAreasL.mxd

Date of issue: 29/05/2018

Scale: 1:16,000

Author: <Add initials>



DISCLAIMER: While Whakatane District Council (WDC), has exercised all reasonable skill and care in controlling the contents of this information, WDC gives no warranty in relation to the material, including its accuracy, reliability and suitability and accepts no liability whatsoever in relation to any loss, damage or other costs (whether direct, indirect or consequential) relating to the use of any material, any compilations, derivative works or modifications of the material. Aerial Photography flown between 2001 and 2016, depending on the area. Parcel boundaries are to be taken as approximate only, not to be substituted for site specific survey. May contain LINZ data: Crown Copyright Reserved. Note: Place names may not conform to LINZ guidelines 2008. Position of all assets & historical sites are approximate, actual positions are to be verified on site.

WHAKATANE TOWNSHIP



DOGS MUST BE ON A LEAD



DOG EXERCISE AREA

1. Warren Park
2. Rex Morpeth Park
3. Awatapu Lagoon
4. Awatapu Park
5. Eve Rimmer Sportsfield
6. Red Conway Park
7. River Edge Park
8. Elenor Place Reserve
9. Hinemoa Glade
10. King St Reserve
11. Valley Road Plantation
12. Valley Rd Escarpment
13. Waiewe Drainage Reserve
14. Mataatua Reserve
15. Mitchell Park
16. Strand Canal
17. Peace St Drainage Reserve
18. Eivers Rd Reserve
19. Otarawairere Tennis Courts Reserve
20. Piripai Beach
22. Athletic Domain
23. Pohutu Reserve
24. Rugby Park
25. Whakatane Heads
26. Warren Cole Walkway
27. Warren Park Dog Exercise Area



DOGS PROHIBITED AT ALL TIMES*

- A. Mananui Playground
- B. Thompson Cres Playground
- C. King St Reserve Playground
- D. Awatapu Lagoon (Riding for the Disabled)
- E. Wairere Falls
- F. Warren Park Playground
- G. Domain Rd Cemetery
- H. Ocean Playground
- I. The Heads Playground
- J. Kohi Pt
- K. Hillcrest Cemetery
- L. Mokorua Bush Scenic Reserve
- M. Sullivan Lake Playground
- N. Appenzell Drive Playground
- O. Rex Morpeth Park Tennis Courts
- P. Aquatic Centre
- Q. Rex Morpeth Park Playground
- R. Farnsworth Cres Playground
- S. Piripai Spit
- T. Otarawairere Tennis Courts
- U. Observatory
- V. Escarpment including Waiewe St Playground
- W. Eve Rimmer Netball
- X. Eve Rimmer Playground
- Y. Skateboard Park
- Z. Paru Site
- AA. Kirk St Playground
- BB. Rose Gardens Playground
- CC. Peace Park Reserve
- DD. Amphitheater\Miniature Railway area
- EE. Salt marsh - Whakatane River
- FF. Whakatane River islands



DOGS PROHIBITED on sportsfields when formalised sporting fixtures are taking place or when the described areas are being leased for any approved activity



DOGS PROHIBITED
9am to 5pm, 7 days a week

* Includes all public play areas (defined as areas containing apparatus or equipment for children to play on)

Burma Road

Map: 14



Dog Control Areas



DISCLAIMER: While Whakatane District Council (WDC), has exercised all reasonable skill and care in controlling the contents of this information, WDC gives no warranty in relation to the material, including its accuracy, reliability and suitability and accepts no liability whatsoever in relation to any loss, damage or other costs (whether direct, indirect or consequential) relating to the use of any material, any compilations, derivative works or modifications of the material. Aerial Photography flown between 2001 and 2016, depending on the area. Parcel boundaries are to be taken as approximate only, not to be substituted for site specific survey. May contain LINZ data: Crown Copyright Reserved. Note: Place names may not conform to LINZ guidelines 2008. Position of all assets & historical sites are approximate, actual positions are to be verified on site.

Path: G:\DATA\GIS\ArcGIS\Maps\Animal Control_Parking\DogControlAreasP.mxd

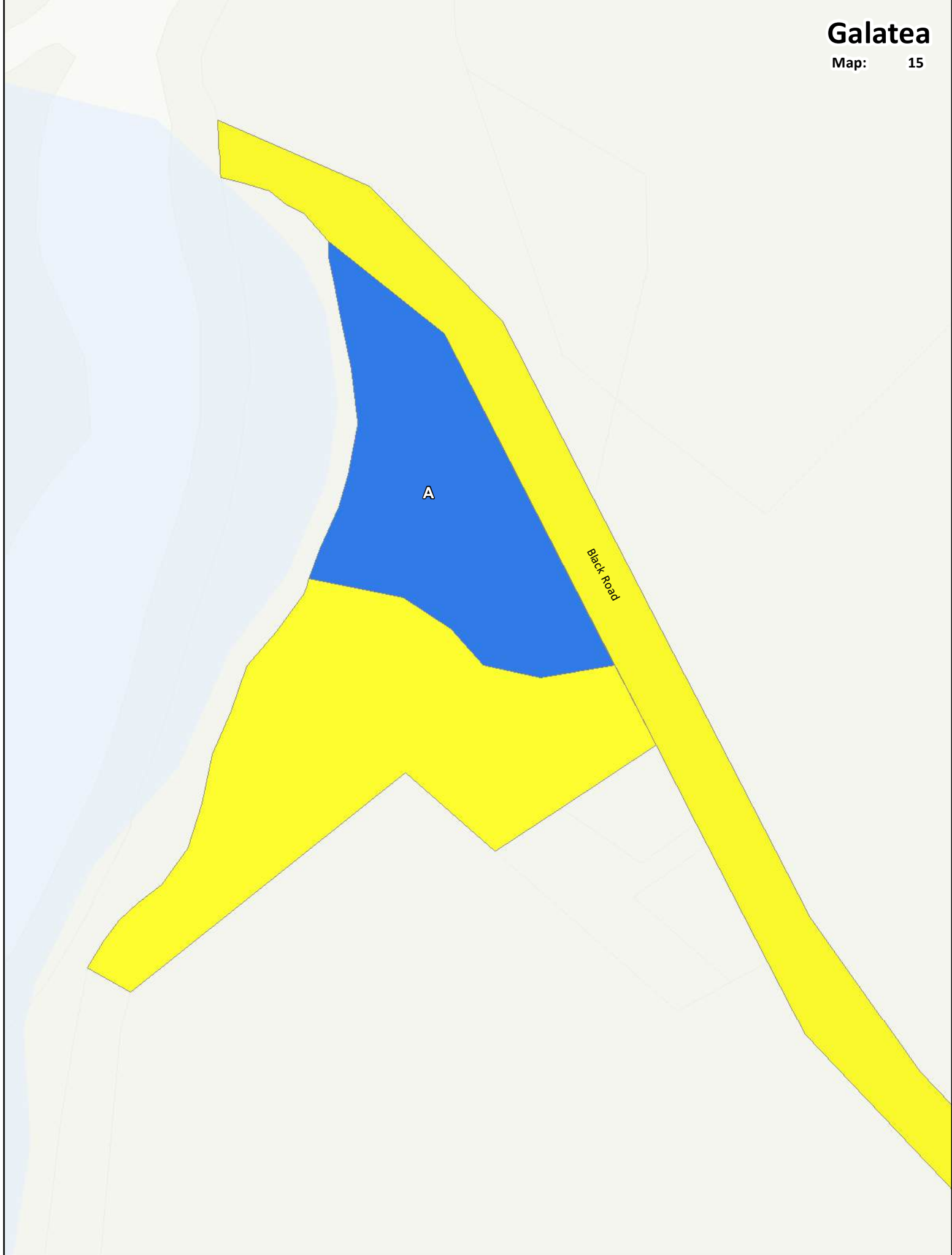
Scale: 1:6,000

Date of issue: 29/05/2018

Author: <Add initials>



www.whakatane.govt.nz



Dog Control Areas



DISCLAIMER: While Whakatane District Council (WDC), has exercised all reasonable skill and care in controlling the contents of this information, WDC gives no warranty in relation to the material, including its accuracy, reliability and suitability and accepts no liability whatsoever in relation to any loss, damage or other costs (whether direct, indirect or consequential) relating to the use of any material, any compilations, derivative works or modifications of the material. Aerial Photography flown between 2001 and 2016, depending on the area. Parcel boundaries are to be taken as approximate only, not to be substituted for site specific survey. May contain LINZ data: Crown Copyright Reserved. Note: Place names may not conform to LINZ guidelines 2008. Position of all assets & historical sites are approximate, actual positions are to be verified on site.

Path: G:\DATA\GIS\ArcGIS\Maps\Animal Control_Parking\DogControlAreasP.mxd

Scale: 1:2,000

Date of issue: 29/05/2018

Author: <Add initials>

GALATEA



DOGS MUST BE ON A LEAD



DOG EXERCISE AREA



DOGS PROHIBITED AT ALL TIMES*

A. Lake Aniwhenua Camping Area



DOGS PROHIBITED on sportsfields when formalised sporting fixtures are taking place or when the described areas are being leased for any approved activity



DOGS PROHIBITED

9am to 5pm, 7 days a week

* Includes all public play areas (defined as areas containing apparatus or equipment for children to play on)