

Legend

- Gambling Venues
- Business Centre Zone - Permitted Area
- Sensitive-Use Feature 50m Buffer

Sensitive-Use Feature

- Educational Institute/ Childcare Centre
- Community Facility
- Place of Worship
- Funeral Home
- Marae
- Social Welfare (Medical Centre/ WINZ Office)
- Playground/ Park

SC, Whakatane District Council

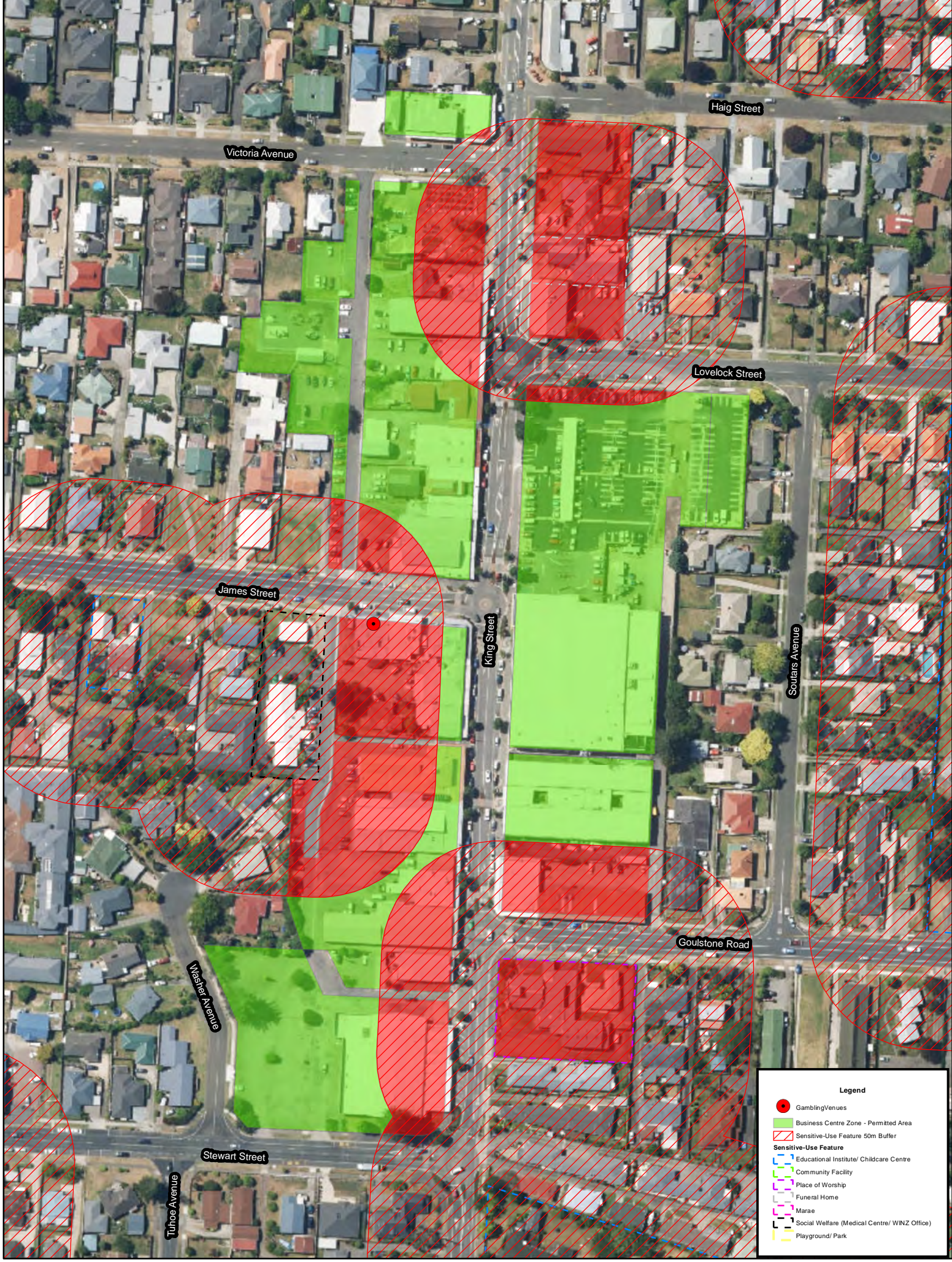


Permitted Areas for New or Relocating Class 4 and Board Venues - Whakatane CBD

Path: G:\DATA\GIS\ArcGIS\Maps\Policy\GamblingPolicyReview2015\GamblingVenuesAnalysis.mxd
 Date of issue: 2/06/2016

Scale: 1:4,630
 Author: CB

DISCLAIMER: While Whakatane District Council (WDC), has exercised all reasonable skill and care in controlling the contents of this information, WDC gives no warranty in relation to the material, including its accuracy, reliability and suitability and accepts no liability whatsoever in relation to any loss, damage or other costs (whether direct, indirect or consequential) relating to the use of any material, any compilations, derivative works or modifications of the material. Aerial Photography flown between 2001 and 2016, depending on the area. Parcel boundaries are to be taken as approximate only, not to be substituted for site specific survey. May contain LINZ data: Crown Copyright Reserved. Note: Place names may not conform to LINZ guidelines 2008. Position of all assets & historical sites are approximate, actual positions are to be verified on site.



Legend

- Gambling Venues
- Business Centre Zone - Permitted Area
- Sensitive-Use Feature 50m Buffer

Sensitive-Use Feature

- Educational Institute/ Childcare Centre
- Community Facility
- Place of Worship
- Funeral Home
- Marae
- Social Welfare (Medical Centre/ WINZ Office)
- Playground/ Park



Permitted Areas for New or Relocating Class 4 and Board Venues - Kopepeo



DISCLAIMER: While Whakatane District Council (WDC), has exercised all reasonable skill and care in controlling the contents of this information, WDC gives no warranty in relation to the material, including its accuracy, reliability and suitability and accepts no liability whatsoever in relation to any loss, damage or other costs (whether direct, indirect or consequential) relating to the use of any material, any compilations, derivative works or modifications of the material. Aerial Photography flown between 2011 and 2016, depending on the area. Parcel boundaries are to be taken as approximate only, not to be substituted for site specific survey. May contain LINZ data: Crown Copyright Reserved. Note: Place names may not conform to LINZ guidelines 2008. Position of all assets & historical sites are approximate, actual positions are to be verified on site.

Path: G:\DATA\GIS\ArcGIS\Maps\Policy\GamblingPolicyReview2015\GamblingVenuesAnalysis.mxd

Scale: 1:1,973

Date of issue: 2/06/2016

Author: CB

www.whakatane.govt.nz



Whakatane Heads



James Street



King Street (Allandale)



Coastlands

Legend

- Gambling/Venues
- Business Centre Zone - Permitted Area
- Sensitive-Use Feature 50m Buffer
- Sensitive-Use Feature
- Educational Institute/ Childcare Centre
- Community Facility
- Place of Worship
- Funeral Home
- Marae
- Social Welfare (Medical Centre/ WINZ Office)
- Playground/ Park



Legend

- Gambling/Venues
- Business Centre Zone - Permitted Area
- Sensitive-Use Feature 50m Buffer
- Sensitive-Use Feature**
- Educational Institute/ Childcare Centre
- Community Facility
- Place of Worship
- Funeral Home
- Marae
- Social Welfare (Medical Centre/ WINZ Office)
- Playground/ Park

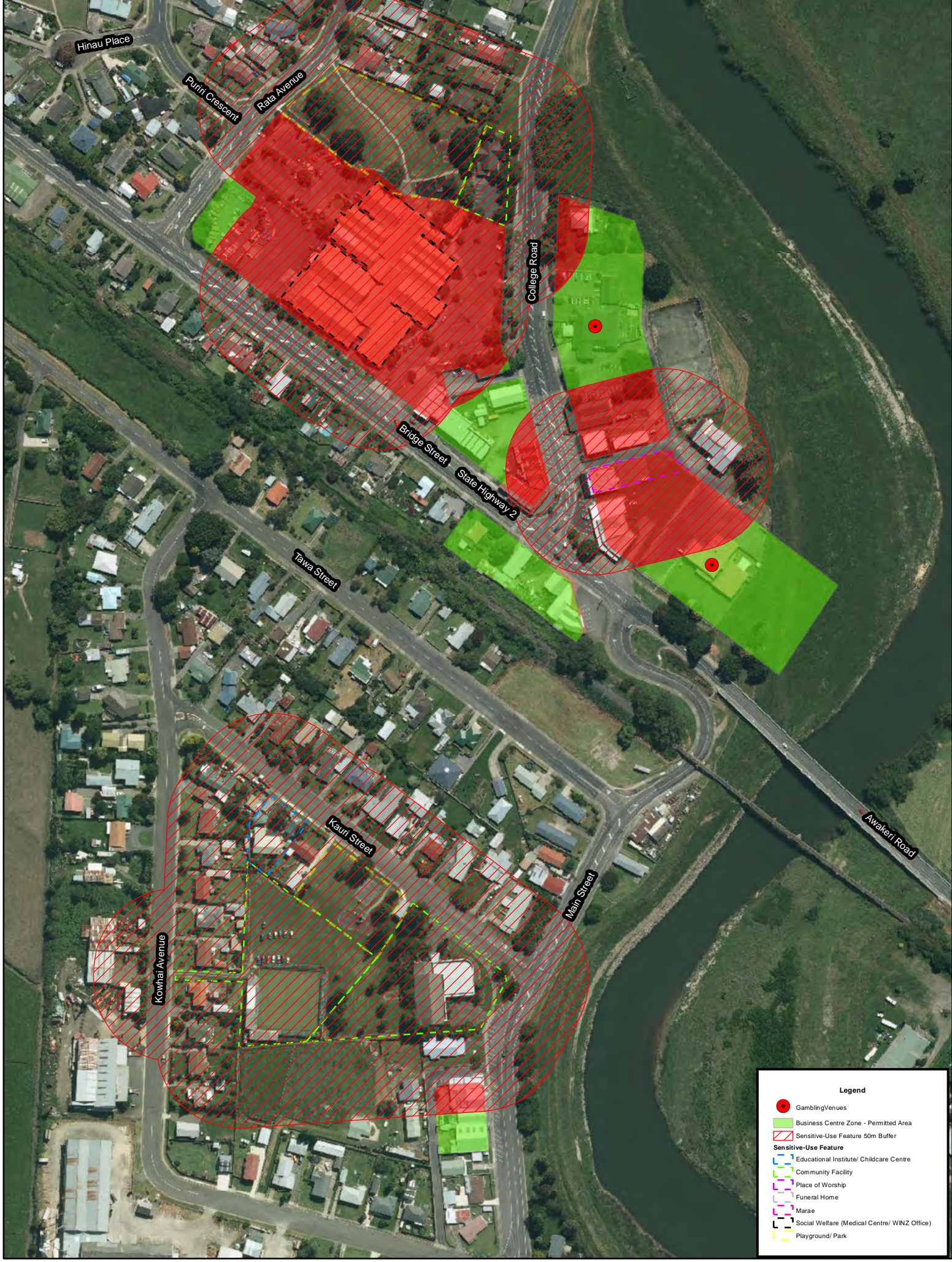
Permitted Areas for New or Relocating Class 4 and Board Venues - Ohope



Path: G:\DATA\GIS\ArcGIS\Maps\Policy\GamblingPolicyReview2015\GamblingVenuesAnalysis.mxd
 Date of issue: 1/06/2016

Scale: 1:4,666
 Author: CB

DISCLAIMER: While Whakatane District Council (WDC), has exercised all reasonable skill and care in controlling the contents of this information, WDC gives no warranty in relation to the material, including its accuracy, reliability and suitability and accepts no liability whatsoever in relation to any loss, damage or other costs (whether direct, indirect or consequential) relating to the use of any material, any compilations, derivative works or modifications of the material. Aerial Photography flown between 2001 and 2016, depending on the area. Parcel boundaries are to be taken as approximate only, not to be substituted for site specific survey. May contain LINZ data: Crown Copyright Reserved. Note: Place names may not conform to LINZ guidelines 2008. Position of all assets & historical sites are approximate, actual positions are to be verified on site.



Legend

- Gambling Venues
- Business Centre Zone - Permitted Area
- Sensitive-Use Feature 50m Buffer
- Sensitive-Use Feature**
- Educational Institute/ Childcare Centre
- Community Facility
- Place of Worship
- Funeral Home
- Marae
- Social Welfare (Medical Centre/ WINZ Office)
- Playground/ Park

Permitted Areas for New or Relocating Class 4 and Board Venues - Edgcombe



Path: G:\DATA\GIS\ArcGIS\Maps\Policy\GamblingPolicyReview2015\GamblingVenuesAnalysis.mxd

Scale: 1:2,831

Date of issue: 2/06/2016

Author: CB



DISCLAIMER: While Whakatane District Council (WDC), has exercised all reasonable skill and care in controlling the contents of this information, WDC gives no warranty in relation to the material, including its accuracy, reliability and suitability and accepts no liability whatsoever in relation to any loss, damage or other costs (whether direct, indirect or consequential) relating to the use of any material, any compilations, derivative works or modifications of the material. Aerial Photography flown between 2001 and 2016, depending on the area. Parcel boundaries are to be taken as approximate only, not to be substituted for site specific survey. May contain LINZ data: Crown Copyright Reserved. Note: Place names may not conform to LINZ guidelines 2008. Position of all assets & historical sites are approximate, actual positions are to be verified on site.



Legend

- Gambling Venues
- Business Centre Zone - Permitted Area
- Sensitive-Use Feature 50m Buffer
- Sensitive-Use Feature**
- Educational Institute/ Childcare Centre
- Community Facility
- Place of Worship
- Funeral Home
- Marae
- Social Welfare (Medical Centre/ WINZ Office)
- Playground/ Park

Permitted Areas for New or Relocating Class 4 and Board Venues - Murupara



DISCLAIMER: While Whakatane District Council (WDC), has exercised all reasonable skill and care in controlling the contents of this information, WDC gives no warranty in relation to the material, including its accuracy, reliability and suitability and accepts no liability whatsoever in relation to any loss, damage or other costs (whether direct, indirect or consequential) relating to the use of any material, any compilations, derivative works or modifications of the material. Aerial Photography flown between 2001 and 2016, depending on the area. Parcel boundaries are to be taken as approximate only, not to be substituted for site specific survey. May contain LINZ data: Crown Copyright Reserved. Note: Place names may not conform to LINZ guidelines 2008. Position of all assets & historical sites are approximate, actual positions are to be verified on site.