



OUR PLACE

Ko Konei

Your Whakatāne District Council
Community Update - February 2021

Ngā mihi o te tau hou

Welcome to the first edition of Ko Konei for 2021. The Whakatāne District Council team wishes you a safe and happy year ahead.



WHAKATĀNE BOAT RAMP ADVISORY

Contractors will be undertaking maintenance work at the Whakatāne boat ramp from Tuesday, 9 February over approximately two weeks. One lane will be closed during low tide when works will take place.

For further information, please call us on 07 306 0500 or email info@whakatane.govt.nz.



The accolades keep coming for Whakatāne this summer, with Ōhope Beach announced as the winner of the NZ Herald's Best Beach competition. Crowd favourites such as Whangamata meant a nervous wait for the results but, as we've seen in the past, Ōhope is still clearly New Zealand's most-loved beach destination. It was easy to see why from voters comments, with many noting the safe swimming, ample space for everyone, the range of activities on offer and, of course, plenty of sunshine.

Earlier this year, Whakatāne was also crowned New Zealand's 2020 Sunshine Capital. Both awards put Whakatāne and Ōhope firmly on the domestic visitor map as we move out of a difficult time for the local tourism sector.



Our Tourism and Marketing team is thrilled with the outcome, and these awards will be at the heart of the team's marketing efforts over the next few months.

Active Whakatāne forges ahead

Contractors are installing a three metre-wide shared-use path along Hinemoa Street from James Street to the Awatapu Lagoon entrance, as part of the Active Whakatāne initiative.

This project, which is due to be completed by the end of April, is designed to create easier and safer routes to schools.

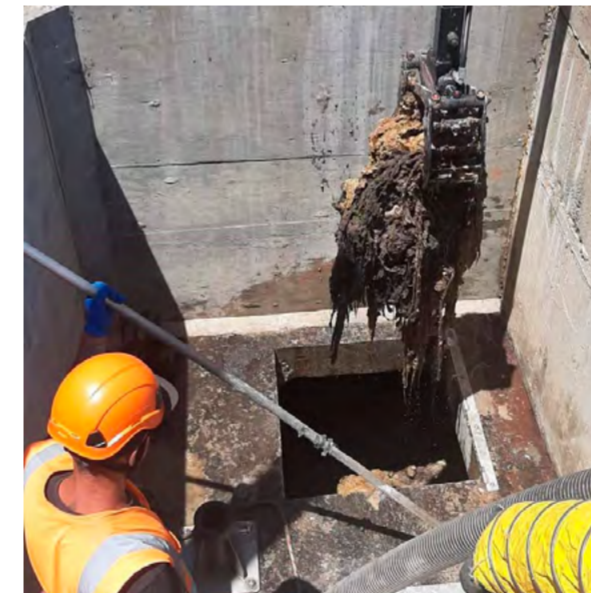
The next stage, which will start mid-February, is an upgrade of the existing walking track along the northern side of the Awatapu Lagoon. The track will be replaced with a three metre-wide, shared-use concrete path.



10m³ fatberg removed

Last month, Council staff removed a 10m³ fatberg and 12 'sucker-truck' loads of waste from a blockage near the Hinemoa Street and Victoria Avenue pump station.

It's a timely reminder to only flush the 3 P's – pee, poo and [toilet] paper down your toilet. Don't flush wet wipes or pour fat, grease and oil down your sink. The hardened fat and oil joins other non-flushable things like wet wipes to create fatbergs.



Only flush the 3 P's

- Pee
- Poo
- [Loo] Paper



Toy library now more accessible

Whakatāne Community Toy Library has joined forces with Whakatāne Libraries to increase the accessibility of toys for more local families and children. The toy library range is now available at Te Kōputu a te whanga a Toi and includes toys, puzzles and games for hire.



The new partnership model means anyone aged over 18 years with a Whakatāne Libraries membership, which is free, can hire toys. Everything is priced at \$1, \$2 or \$3 and can be borrowed for up to three weeks.

Kim Johnston, Library Projects and Business Coordinator, emphasises that the Toy Library isn't limited to parents with young children.

"We've already noticed that there are a number of grandparents and caregivers who hire toys, particularly during the school holidays," she says. "The three-week hire period seems to be the perfect amount of time to hold children's interest, too."

Whakatāne Libraries staff encourage anyone who is interested in hiring toys to visit Te Kōputu during opening hours and speak with one of the friendly staff members.

On Thursday, 11 February between 4-8pm, King Street, between the Goulstone Road and James Street roundabouts will transform into a closed-to-traffic space for people, community, play, wellbeing and art.



Fuelling the activity will be kai for sale from food trucks and the diverse and delicious eateries in Kopeopeo. Locals and visitors are invited to gather to enjoy a meal, music, entertainment and the energy of aspiring young creatives.

The Eat + Be:Long event is an Innovating Streets initiative supported by Whakatāne District Council in association with Youth of Kopeopeo.



Rangatahi Māori encouraged to apply for mentor programme

Whakatāne District Mayor, Judy Turner, is looking for two rangatahi Māori to take part in the Tuia mentoring programme this year. The national programme, now in its tenth year, connects mayors with Māori youth. The one-to-one mentoring model is designed to develop leadership skills, enhance contributions to local communities and recognise, accept and celebrate diversity.

Applications close
5pm Monday,
8 February 2021.

For more information
and to apply, visit
whakatane.govt.nz/tuia

Eligible candidates must be aged 18-25, actively involved in contributing to the wellbeing of their community at some level, be able to attend three, three-day and two, four-day wānanga, be involved in a community contribution project, and have support from others such as whānau, hapū and employers to participate.

Faith Playle, who was the Whakatāne District candidate last year, says her experience was a privilege that has changed her perspective on life.

"When I finished our first wananga, I felt I could achieve anything," the 22-year old says. "I have made life-long connections, and it's proven to me that no matter where you come from, no matter what your life journey is, you are capable of creating and doing incredible things. I really wish every rangatahi Māori could have the opportunity to take part in the Tuia programme."

Meet the team Kanohi kitea

Andrew Smith

Manager Aquatics and Recreation



What I love most about my job
People. Every day I am surrounded by incredible people, who continue to inspire me. Our customers who are striving towards their goals, or achieving them; and our fantastic team members who continuously suggest new initiatives or ideas to improve the level of service we offer.

What I find most challenging about my job
My greatest challenge is endeavoring to meet the needs and wishes of all those who use our facilities.

Each month, we'll introduce a Whakatāne District Council staff member so you can 'meet' the team working for our communities.

Why I love living in the Whakatāne District
We moved to Whakatāne a year and a half ago, and we have never felt more welcome or part of a community as we do here. We live in a remarkable part of the country, and it's easy to lose yourself in its beauty.

Hobbies/interests outside work
Family is really important to me. After work I enjoy spending time with my wife and three children, and adventuring around the district. I am big football fan and still try to follow my team from the UK, Portsmouth FC – although I have to get up quite early to watch the games! I have also recently joined Whakatāne Theatre with the Phantom of the Opera production.