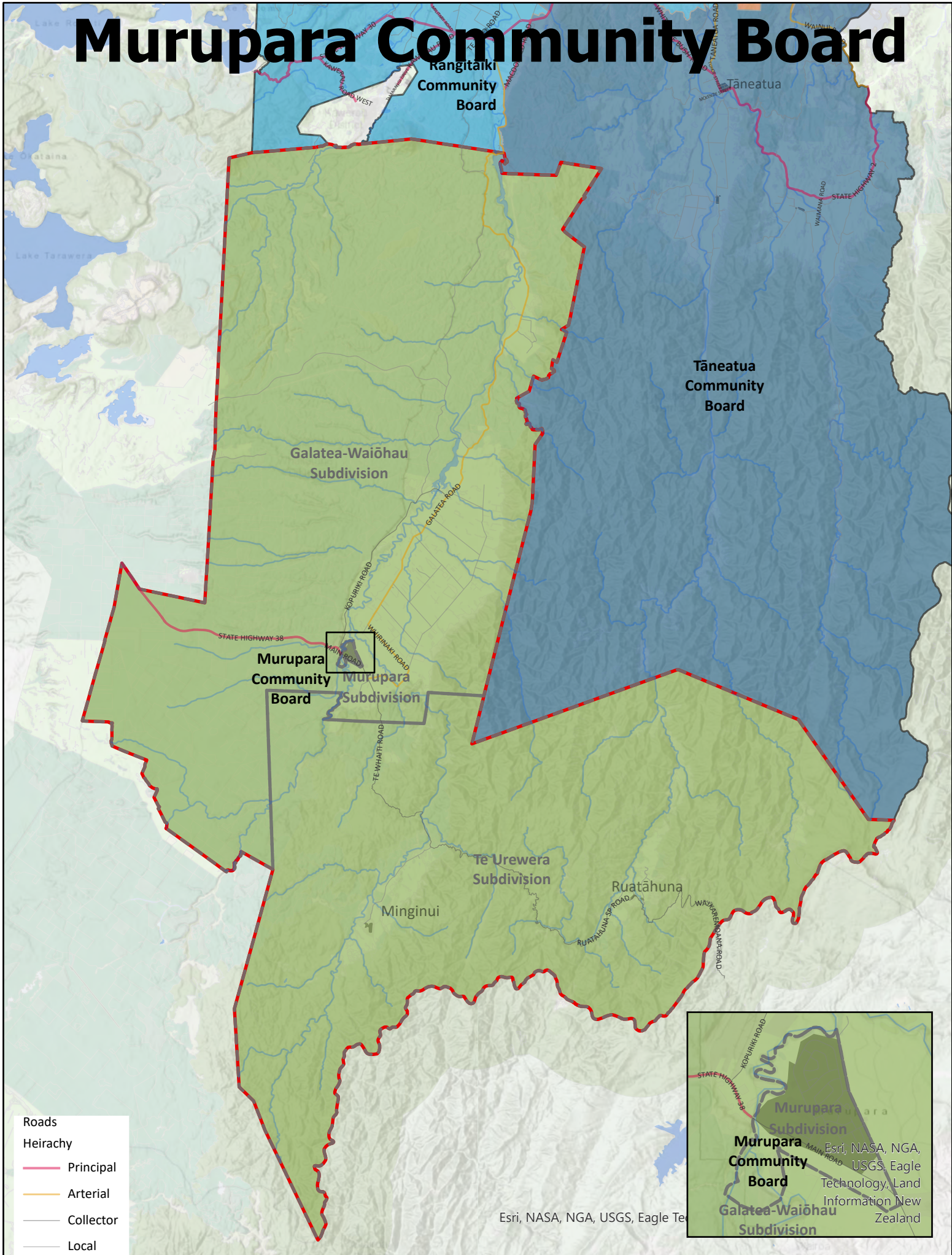
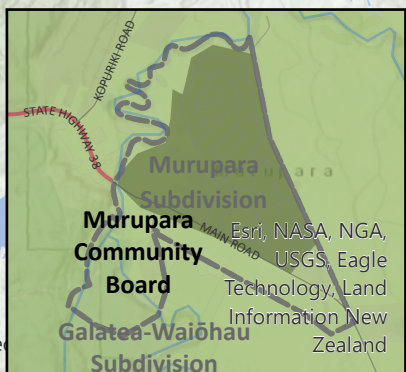


Murupara Community Board



- Roads**
- Heirarchy**
- Principal
 - Arterial
 - Collector
 - Local



Esri, NASA, NGA, USGS, Eagle Technology, Land Information New Zealand



Murupara Community Board and Subdivisions

Path: G:\DATA\GIS\Projects\DemocracyServices\RepresentationReview2021new.aprx
 Date of issue: 9/03/2023

Scale: 1:350,000
 Author: stepheno



DISCLAIMER: While Whakatāne District Council (WDC), has exercised all reasonable skill and care in controlling the contents of this information, WDC gives no warranty in relation to the material, including its accuracy, reliability and suitability and accepts no liability whatsoever in relation to any loss, damage or other costs (whether direct, indirect or consequential) relating to the use of any material, any compilations, derivative works or modifications of the material. Aerial Photography flown between 2001 and 2016, depending on the area. Parcel boundaries are to be taken as approximate only, not to be substituted for site specific survey. May contain LINZ data: Crown Copyright Reserved. Note: Place names may not conform to LINZ guidelines 2008. Position of all assets & historical sites are approximate, actual positions are to be verified on site.