

### Dog Control Areas



Path: G:\DATA\GIS\ArcGIS\Maps\AnimalControl\_Parking\DogControlArea.mxd  
Date of issue: 29/05/2018

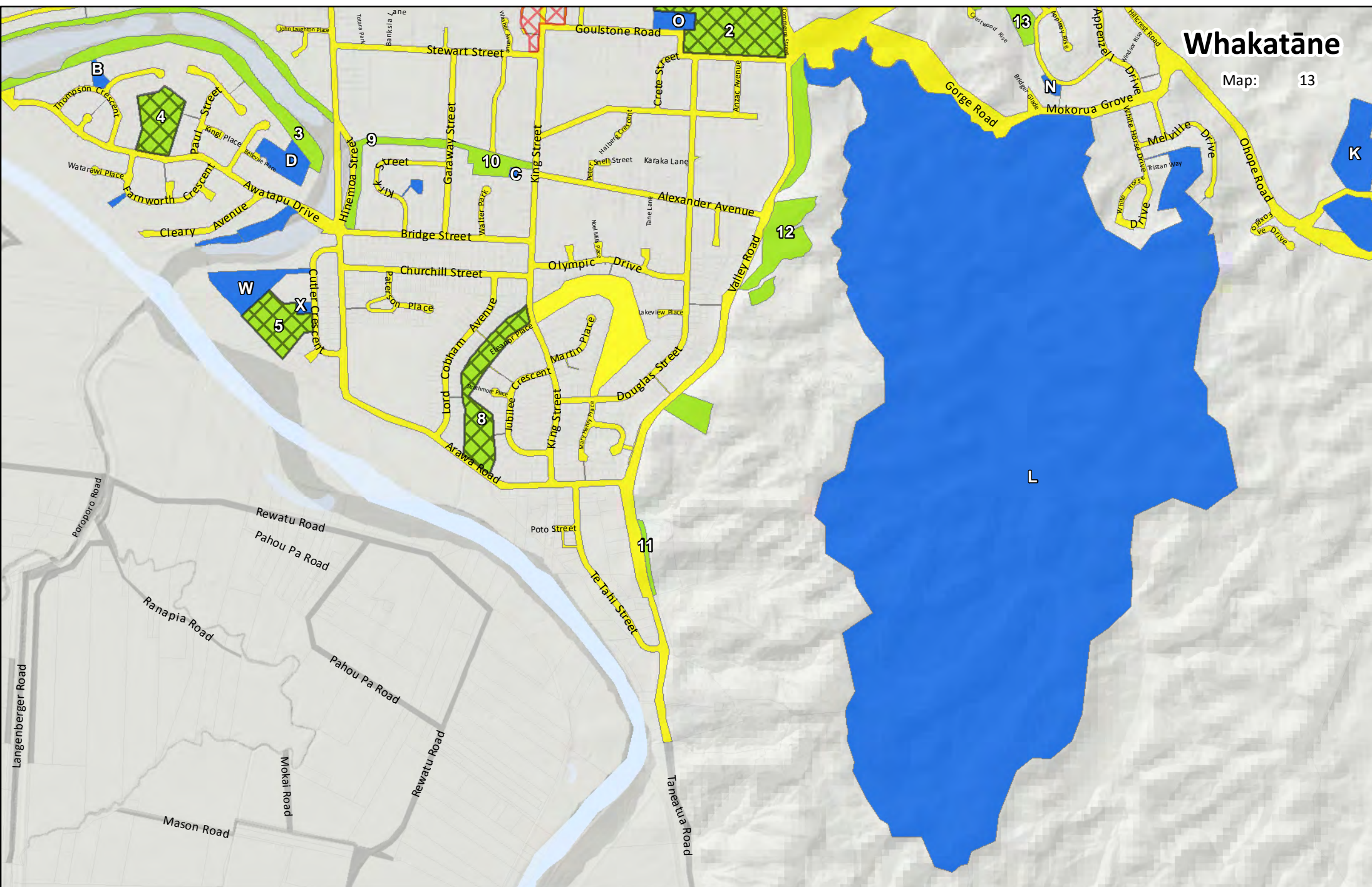
Scale: 1:16,000

Author: <Add initials>



DISCLAIMER: While Whakatāne District Council (WDC), has exercised all reasonable skill and care in controlling the contents of this information, WDC gives no warranty in relation to the material, including its accuracy, reliability and suitability and accepts no liability whatsoever in relation to any loss, damage or other costs (whether direct, indirect or consequential) relating to the use of any material, any compilations, derivative works or modifications of the material. Aerial Photography flown between 2001 and 2016, depending on the area. Parcel boundaries are to be taken as approximate only, not to be substituted for site specific survey. May contain LINZ data: Crown Copyright Reserved. Note: Place names may not conform to LINZ guidelines 2008. Position of all assets & historical sites are approximate, actual positions are to be verified on site.





### Dog Control Areas



Path: G:\DATA\GIS\ArcGIS\Maps\AnimalControl\_Parking\DogControlAreaL.mxd

Date of issue: 29/05/2018



DISCLAIMER: While Whakatāne District Council (WDC), has exercised all reasonable skill and care in controlling the contents of this information, WDC gives no warranty in relation to the material, including its accuracy, reliability and suitability and accepts no liability whatsoever in relation to any loss, damage or other costs (whether direct, indirect or consequential) relating to the use of any material, any compilations, derivative works or modifications of the material. Aerial Photography flown between 2001 and 2016, depending on the area. Parcel boundaries are to be taken as approximate only, not to be substituted for site specific survey. May contain LINZ data: Crown Copyright Reserved. Note: Place names may not conform to LINZ guidelines 2008. Position of all assets & historical sites are approximate, actual positions are to be verified on site.

Scale: 1:16,000

Author: <Add initials>

# WHAKATĀNE TOWNSHIP



## DOGS MUST BE ON A LEAD



## DOG EXERCISE AREA

1. Warren Park
2. Rex Morpeth Park
3. Awatapu Lagoon
4. Awatapu Park
5. Eve Rimmer Sportsfield
6. Red Conway Park
7. River Edge Park
8. Elenor Place Reserve
9. Hinemoa Glade
10. King St Reserve
11. Valley Road Plantation
12. Valley Rd Escarpment
13. Waiewe Drainage Reserve
14. Mataatua Reserve
15. Mitchell Park
16. Strand Canal
17. Peace St Drainage Reserve
18. Eivers Rd Reserve
19. Otarawairere Tennis Courts Reserve
20. Piripai Beach
22. Athletic Domain
23. Pohutu Reserve
24. Rugby Park
25. Whakatane Heads
26. Warren Cole Walkway
27. Warren Park Dog Exercise Area



## DOGS PROHIBITED AT ALL TIMES\*

- A. Mananui Playground
- B. Thompson Cres Playground
- C. King St Reserve Playground
- D. Awatapu Lagoon (Riding for the Disabled)
- E. Wairere Falls
- F. Warren Park Playground
- G. Domain Rd Cemetery
- H. Ocean Playground
- I. The Heads Playground
- J. Kohi Pt
- K. Hillcrest Cemetery
- L. Mokorua Bush Scenic Reserve
- M. Sullivan Lake Playground
- N. Appenzell Drive Playground
- O. Rex Morpeth Park Tennis Courts
- P. Aquatic Centre
- Q. Rex Morpeth Park Playground
- R. Farnsworth Cres Playground
- S. Piripai Spit
- T. Otarawairere Tennis Courts
- U. Observatory
- V. Escarpment including Waiewe St Playground
- W. Eve Rimmer Netball
- X. Eve Rimmer Playground
- Y. Skateboard Park
- Z. Paru Site
- AA. Kirk St Playground
- BB. Rose Gardens Playground
- CC. Peace Park Reserve
- DD. Amphitheater\Miniature Railway area
- EE. Salt marsh - Whakatane River
- FF. Whakatane River islands



DOGS PROHIBITED on sportsfields when formalised sporting fixtures are taking place or when the described areas are being leased for any approved activity



DOGS PROHIBITED  
9am to 5pm, 7 days a week

\* Includes all public play areas (defined as areas containing apparatus or equipment for children to play on)