



Tins, aluminium can and steel *Ngā tini, ngā kēne, a ngā maitai*

Remove lids from tin cans and rinse thoroughly. No need to remove the labels. Lids should be put in the general waste bin.

✓ YES, these can be recycled

- Aluminium cans
- Steel cans
- Tin cans

✗ NO, these can't be recycled

- Dirty cans containing food, liquid or hazardous waste
- Tinfoil
- Aluminium foil trays
- Household appliance batteries
- Aerosols
- Metal jar lids



Glass *Karāehe*

Remove lids from bottles and jars and rinse thoroughly. Lids must be put in the general waste bin.

✓ YES, these can be recycled

- Glass bottles - all colours
- Jars - all colours

✗ NO, these can't be recycled

- Broken glass
- Lightbulbs
- Ovenproof glass (Pyrex® or similar), drinking glasses
- Window glass or mirrors
- Automotive glass or mirrors
- Ceramics



Other items

These items will only be accepted at the Resource Recovery Centre.

They can't go in the in the kerbside collection bins.

✓ YES, take these to the Resource Recovery Centre

- Large steel items
- Batteries - household, car, power tool ect batteries - household quantities only
- Whiteware
- Waste oil, re-usable paint and hazardous or liquid household chemicals in their original container – household quantities only

✗ We can't accept soil, odorous material (offal, carcasses, fish waste etc), materials containing asbestos, industrial chemicals, liquid waste, explosive or highly flammable waste and infectious waste. Fence wire must be free of battens, posts and wood and cut to 1m lengths.

Murupara rubbish and recycling *Para me te Hangarua ki Murupara*



How to reduce the amount you pay *Whakaitia te utu*

If you only use your kerbside collection service and don't use the dump, you won't pay anything extra on top of your rates. You'll only pay if you take rubbish (including concrete and scrap metal) and greenwaste to the dump.

Turn over for a full list of the fees and charges

From 1 February 2025, fees and charges will be introduced at the Murupara Refuse Transfer Station, commonly known as 'the dump'. It will also mark a name change to the Murupara Resource Recovery Centre, which better reflects the purpose of the facility.

There will be a 12-month trial phase for the fees and charges, and we'll closely monitor the impact and ask for your feedback. The fees will align with those at the Whakatāne Resource Recovery Centre, and will be payable by EFTPOS or credit card – we won't be able to accept cash. Between now and February 2025, there will also be some changes to the facility to make it more user-friendly and improve operations.

The decision to introduce fees and charges was included in the Long Term Plan 2024-34. In the past, the cost of running the facility has been paid for by all Whakatāne District ratepayers, rather than by those who use it. The cost of dealing with waste is steadily increasing and continuing to provide a 'free' facility is not financially viable.

Sort it out *Kōmiritia te para*

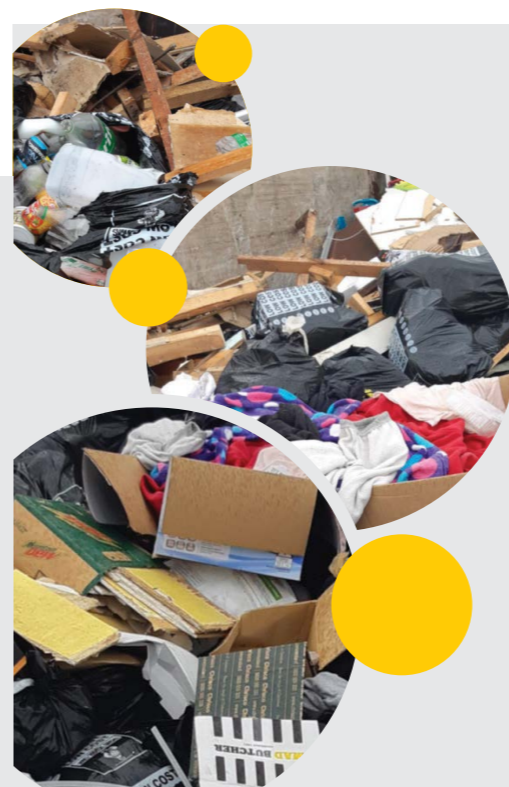
It makes sense to sort your rubbish to avoid paying more than you need to.

We recently did an audit of the rubbish that was dropped off at the dump. Results showed that between 30 and 50 percent could have been recycled or reused. This means that those who dumped recyclables along with their rubbish could save up to half the amount in fees if they'd sorted it out first.

Recyclable items – glass bottles and jars, aluminium and tin cans, cardboard, paper, and clean plastics (grades 1, 2 and 5 without lids) – can be dropped off for FREE.

You can also drop off tyres* and household hazardous waste** free of charge. There's also no cost to use the offal holes.

* limit five tyres per visit. ** must be in original container.



Electrical or electronic appliances

CRew (07 308 5963) will accept both working and non-working appliances at 40 Te Tahī Street, Whakatāne. There is a small fee if you deliver non-working appliances.

People NOT Machines

Recycling is handled by real people, not machines! Please be kind - don't recycle dirty, smelly or sharp materials.

RESOURCE RECOVERY CENTRES

WHAKATĀNE	MURUPARA
60 Te Tahī Street, Whakatāne	Harakeke Road, Murupara
Mon-Fri: 8am-5pm	Mon, Wed, Fri: 10am-3pm
Sat & Sun, most public holidays: 9am-4pm	Tue & Thu: 2:30pm-5pm Sat & Sun: 9am-4pm
ANZAC Day: 1pm-4pm	ANZAC Day: 1pm-4pm
Closed: Good Friday, Christmas Day, New Year's Day	Closed: Good Friday, Christmas Day, New Year's Day

WHAKATĀNE DISTRICT COUNCIL
P 07 306 0500
E info@whakatane.govt.nz
W whakatane.govt.nz/recycling



Murupara Resource Recovery centre fees and charges

Ngā utu

Effective from 1 February 2025 and GST inclusive

General refuse (rubbish)	
Refuse bag (60 litre bag max)	\$5.50 per bag
Car or station wagon	\$42
Ute, van or trailer	\$58
Greenwaste	
Car or station wagon	\$15
Ute, van or trailer	\$26
Degassing*	
	\$25 per unit
Recyclables	
Glass bottles and jars, aluminium and tin cans, cardboard, paper, clean plastics (grades 1, 2 and 5 without lids but no motor oil or chemical containers)	FREE
Offal holes	
	FREE
Tyres**	
	FREE
Household hazardous wastes***	
	FREE

* Degassing of fridges, freezers and air conditioning units is required under the Ozone Layer Protection Act 1996 and the Climate Change Response Act 2002.

** Limit five tyres per visit.

*** Must be in original container.

Easy ways to reduce your rubbish

- ✓ Buy products that use less packaging i.e. bulk products
- ✓ Avoid or reduce the use of disposables e.g. razors, pens, plates and cups
- ✓ Re-use boxes and jars for storage
- ✓ Think before you throw something away – donate re-usable toys, books, furniture and clothing
- ✓ Put paper, cardboard, tins, cans and plastics in your yellow lid bin for the fortnightly recycling collection
- ✓ Use your recycling crate for glass bottles and jars
- ✓ If you have a garden, compost your grass clippings and tree prunings, and fruit and vege scraps

Recycling Hangarua



Paper Pepa

✓ YES, these can be recycled

- Newspaper
- Office paper
- Magazines
- Junk mail
- Books
- Wrapping paper: plain only, not metallic or plastic-coated

✗ NO, these can't be recycled

- Plastic-coated paper
- Food wrapping paper
- Paper used for personal hygiene, including tissues and napkins
- Shredded paper



Cardboard Pepamārō

✓ YES, these can be recycled

- Cardboard boxes
- Clean pizza boxes
- Egg cartons/trays
- Books

✗ NO, these can't be recycled

- Polystyrene, even within boxes
- Plastic sheet: corflute, real estate signs
- Tetra Pak®/cardboard designed for the fridge or freezer



Plastic Kirihou

Only plastics graded 1, 2 and 5 can be recycled.

✓ YES, these can be recycled

- Plastic graded 1, 2 and 5
- Milk bottles, large yoghurt and ice cream containers - graded 1, 2 and 5
- Soft drink bottles - graded 1, 2 and 5
- Plastic bottles from the bathroom and laundry - graded 1, 2 and 5

✗ NO, these can't be recycled

- Soft plastics: cling film, bread bags, plastic bags
- Plastic packaging - bubble wrap
- Polystyrene
- Meat trays with no stamp or not graded 1, 2 and 5
- Small yoghurt containers
- All lids

If you don't have a kerbside collection, or have excess recycling, you can recycle for free at the Whakatāne or Murupara Resource Recovery Centres.



Soft plastic recycling bins are available at Woolworths Whakatāne. Visit recycling.kiwi.nz for more information.



Compostable products can't be recycled, please don't put them in the recycling.



Greenwaste must have grown in the garden (no flax, palm fronds and yucca) and be soil-free.

